

WAIKATO RAUPATU LANDS TRUST  
ANNUAL REPORT 2005



Waikato Raupatu Lands Trust



## TE KAUHANGANUI O WAIKATO (INC)

NOTICE is hereby given that the 2005 Annual General Meeting of the Te Kauhanganui o Waikato (Incorporated) will be held in the Debating Chamber at Hopuhopu, 451 Old Taupiri Road, Ngaaruawaahia on Saturday 26 November 2005, and will start at 9am.

### BUSINESS

1. to receive and consider the annual report for the year ended 31 March 2005;
2. to consider and if thought appropriate, pass the following resolutions:
  - adopt the consolidated financial statements for the year ended 31 March 2005;
  - adopt the annual report;
3. to consider such other business of the Te Kauhanganui o Waikato (Incorporated) which in the opinion of the Chairman may be desirable.

*Nau Mai Haere Mai*

## WAIKATO RAUPATU LANDS TRUST

NOTICE is also given that at 4pm on Saturday 26 November 2005, the 2005 Annual General Meeting of the Waikato Raupatu Lands Trust will be held in the Debating Chamber at Hopuhopu, 451 Old Taupiri Road, Ngaaruawaahia.

### BUSINESS

1. to receive and consider the annual report for the year ended 31 March 2005;
2. to consider and if thought appropriate, pass the following resolutions:
  - adopt the consolidated financial statements of the Waikato Raupatu Lands Trust for the year ended 31 March 2005;
  - adopt the annual report;
3. to consider such other business of the Waikato Raupatu Lands Trust which in the opinion of the Chairman may be desirable.

*Nau Mai Haere Mai*

### FRONT COVER ARTWORK

KIA MAU  
HOLDFAST

Stainless steel, custom wood, 2004

*Collection of Waikato Raupatu Lands Trust*



## VISION STATEMENT

Maaku anoo e hanga i tooku nei whare  
Ko ngaa pou pou he maahoe he patatee  
Ko te taahuhu he hiinau  
Me whakatupu ki te hua o te rengarenga  
Me whakapakari ki te hua o te kawariki

*I shall fashion my house  
The support posts shall be of mahoe and patete  
The ridgepole of hinau  
The inhabitants shall be raised on the rengarenga  
And nurtured on the kawariki*

*Taawhiao*  
Second Maaori King

## CONTENTS

Mihi.....	2
Ngaa Pou O Pootatau .....	3
Members of Te Arataura Executive of Te Kauhanganui o Waikato Incorporated Directors of Waikato Raupatu Trustee Company Ltd .....	4
Chairman's Report .....	6
Commemorating the Waikato Raupatu Claim Settlement ..	8
Location Map of Te Kauhanganui Marae .....	10
Chief Executive's Report.....	11
Te Kauhanganui o Waikato.....	14
Outstanding Claims.....	15
Waikato Raupatu Trustee Company Limited .....	17
Waikato Raupatu Lands Trust .....	19
Education Grants .....	21
Marae Grants .....	33
Financial Statements.....	34
Auditor's Report .....	59



# MIHI

Taakiri mai te whetuu takiata. He maaramatanga i poua ki runga i te mata o te whenua.

He hoonore, he koroariatanga i whakataua e Te Atua ki runga i te kaawai rangatiratanga.

Ko Kiingi Pootatau Te Wherowhero, heke iho ki aa Matutaera Taawhiao, Mahuta, Te Rata me Kiingi Korokii. I teenei raa, koo taa raatou mokopuna he urukehu, koo Te Arikiniui a Te Atairangikaahu e noho nei i runga i te taumata tapu i roto i te koroariatanga a Te Atua.

## POROPOROAKI KI AA TUMATE MAHUTA

E te Rangatira, e Tumate.

E koro, te kuru pounamu, Te Pou o Te Kiingitanga. Takoto ake, whakarongo. Teenei o nui. Teenei o wehi kua tae mai ki mua i too aroaro. Takoto mai i roto i te wahangutanga o te mate.

He momo tangata e kore anoo e kitea, kua ngaro raa ii te tirohanga kanohi.

He tangata i piri ki ngaa tohutohu aa Te Puea, i ki ai ngaa oohaakii,

*“Ahakoa ngaa mano huri atu ki te huumaariatanga, mahue mai ki ahau, kotahi mano e rima rau, rima te kau, te kau maa rua, ko ahau kei roto, ko Te Atua tooku piringa, ka puta ka ora.”*

I ngaa waa e ora ana koe i kite koe i te puaawaitanga o ngaa wawata,

*“I riro whenua atu me hoki whenua mai. Ko te moni hei utu mo te hara.”*

Tuuturu. I kite koe i te whaka tutukitanga o te raupatu i waenganui i Te Karauna me Waikato.

Noo reira, haere raa te Paapaa o Te Whare Ariki me Te Kaahui Ariki nui tonu.

Kua tae koe ki te urunga, te taka, ki te moenga te whakaarahia ki te kaainga mutunga mai mo taatou, ngaa taangata.

## E TE IWI, TEENAA KOUTOU

Teenei te tuku atu i ngaa mihi ki a taatou katoa ngaa kanohi ora o ngaa tuupuna me ngaa maatua, te whakatupuranga i waihotia hei whakatutuki i ngaa wawata o raatou maa. Ki a koutou e noho mai naa i o taatou papakainga i runga i ngaa papanekenekehanga araa i runga hoki i o taatou pae marae i roto o Waikato, Maniapoto, Raukawa me Hauraki.

Me mihi hoki ki o taatou mate i poua nei ngaa parekawakawa ki o taatou marae katoa i tuia hoki raatou. Nooreira haere, haere, haere.

Kua tae mai ki te waa o too taatou hui-aa-tau ka tuu ki Hopuhopu a te Raahoroi rua te kau maa ono o te marama o Whiringa-aa-Rangi (Noema), rua mano ma rima. Kei konaa ka tuutuki anoo taatou katoa.

Nooreira, ngaa manaakitanga ki runga i a koutou katoa.

PAI MAARIRE

HONE HAUNUI



## NGAA POU O POOTATAU “THE PILLARS OF POOTATAU”



TE ARIKINI & FRED GRAHAM WITH THE MASTERPIECE TE MANU RERE I TE ATA HAPARA  
– TE ARIKINI TE ATAIRANGIKAAHU, TUURANGAWAEWAE MARAE, APRIL 2005

This collection of major artworks by renowned artist Fred Graham (Ngaati Korokii, Kahukura, Raukawa) epitomises the richness of whakapapa, history, symbolism and metaphor of the Kiingitanga for present and future generations. The collection contains imagery of historical landmarks, poignant memories and proverbial sayings that reinforce the history of Waikato-Tainui.

The Waikato Raupatu Lands Trust acquired the collection in perpetuity for Tainui iwi. *Nгаа Pou o Pootatau* was exhibited at Tuurangawaewae Marae in April this year to enable Tainui Iwi to view before sharing these pieces of mastery with the public at the Waikato Museum.

*“Over the past few hundred years, we have been blessed with many fine orators.  
These orators expressed their ideas in the form of the spoken word.*

*I like to think that as each idea was expressed, it was captured by the wind and  
safely deposited with the children of Tane for safe keeping...*

*Nгаа rerenga o te hau, teenei kua puaawai*

*It is our role as artists to release the entrapped words from the raakau,  
by giving each a visual form.”*

FRED GRAHAM 2005

*The Waikato Raupatu Lands Trust acknowledges the support of staff of the Waikato Museum in this exhibition.*



**Members of Te Arataura  
Executive of Te Kauhanganui O Waikato Incorporated  
Directors of the Waikato Raupatu Trustee Company Limited  
(The Board)**



LADY RAIHA MAHUTA

**LADY RAIHA MAHUTA**  
KAAHUI ARIKI  
REPRESENTATIVE  
CO-NEGOTIATOR  
OUTSTANDING CLAIMS

Chair: Outstanding Claims Advisory Committee  
Member: Human Resources Advisory Committee, Hopuhopu Development Advisory Committee  
Other: Ngaa Marae Toopu Hamlin's Hill Trust  
*Ngaati Manu, Ngaati Hine, Ngaapuhi*



KINGI PORIMA

**KINGI PORIMA**  
CHAIR

*Waipapa Marae*  
Ngaati Hikairo  
Chair: Te Kauhanganui, Te Arataura, Waikato Raupatu Trustee Company Limited, Human Resources Committee  
Member: Fisheries Allocation Advisory Committee. Ex officio of Standing and Advisory Committees.  
Director Tainui Group Holdings Limited



JUSTINE BERRYMAN

**JUSTINE BERRYMAN**

*Te Ohaaki Marae*  
Ngaati Whaawhaakia  
Chair: Puutea Manaaki Advisory Committee  
Member: Waikato Endowed College Advisory Committee, former Legal Services Advisory Committee



TE AOPEHI KARA

**TE AOPEHI KARA,**  
CNZM

*Te Kotahitanga Marae*  
Ngaati Korokii  
Member: Fisheries Allocation Advisory Committee



SHANE SOLOMON

**SHANE SOLOMON**

*Tuurangawaewae Marae*  
Ngaati Mahuta  
Member: Human Resources Advisory Committee, Rules Review Advisory Committee, Outstanding Claims Advisory Committee, former Legal Services Review Advisory Committee, Fisheries Allocation Advisory Committee





SONNY WILSON

**SONNY WILSON  
DEPUTY CHAIR**

*Hukanui Marae*  
Ngaati Wairere

Deputy Chair: Te Kauhanganui, Te Arataura, Waikato Raupatu Trustee Company Limited  
Member: Puutea Manaaki Advisory Committee, Hopuhopu Development Advisory Committee, Chair: Tainui Festival Committee, Tainui Waka Sports Awards Committee



TIPA MAHUTA

**TIPA MAHUTA  
EXECUTIVE SECRETARY,  
TE ARATAURA**

*Waahi Marae*  
Ngaati Mahuta

Chair: Waikato Endowed College Advisory Committee  
Member: Puutea Manaaki Advisory Committee, Fisheries Allocation Advisory Committee  
Director Tainui Group Holdings Ltd

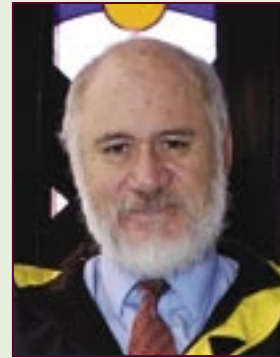


RUKUMOANA  
Schaafhausen

**RUKUMOANA  
SCHAAFHAUSEN**

*Rukumoana Marae*  
Ngaati Hauaa

Chair: Rules Review Advisory Committee, former Legal Services Advisory Committee



TOM ROA

**TOM ROA**

*Puurekireki Marae*  
Ngaati Apakura

Member: Puutea Manaaki Advisory Committee, Human Resources Advisory Committee



PATIENCE TE AO

**PATIENCE TE AO**

*Tauranganui Marae*  
Ngaati Tiipa

Chair: Tribal Development Advisory Committee



# CHAIRMAN'S REPORT

*E te iwi, teena koutou*

I am pleased to report to you this year on the progress the Board has made with its strategic plan we committed ourselves to twelve months ago, as well as some of the milestones achieved along the way. The Board has been assisted in its endeavours by Te Kauhanganui as the major stakeholder, and staff who have worked outstandingly towards achieving the results we aspire to as we gather the threads of our past and present together to take us into the future as a tribe.



KINGI PORIMA, CHAIRMAN

This year signifies several things: The tenth anniversary of Waikato-Tainui's historic settlement was celebrated at the 39th Koroneihana of Te Arikinui in May; Fred Graham's collection named Ngaa Pou o Pootatau by Te Arikinui was purchased in perpetuity; Te Kauhanganui changed the name of their Executive and enters its third term of operation in 2006.

A major milestone for Te Kauhanganui this year was the decision to change the name of its Executive from Te Kaumaarua to Te Arataura. Te Kauhanganui exercised its will in favour of the name change by exceeding the 75% vote threshold.

The membership of the Board was reduced from twelve to ten due to two vacancies that occurred during the current term. After consultation with Te Kauhanganui the Board decided that they would continue to operate with ten members in this final year of its term before the next elections.

The Board's commitment to getting the Endowed College operational as a research and development facility is well advanced. An endowment from the Waikato Raupatu Lands Trust will give stability to the required structures for the College and confidence to being fully operational in the 2006-2007 year.

In terms of the outstanding claims, in May this year the Crown recognised the Deed of Mandate for the Waikato Raupatu Trustee Company Ltd and Co-Negotiators to negotiate a resolution of the claims with priority to be given to the Waikato River claim. As well, Te Kauhanganui endorsed the appointment of a Principal Advisor for and by each of the west coast harbours (Manukau, Whaingaroa, Kaawhia, Aotea) and Maioro and Wairoa blocks to the claims team.

As part of the strategic direction undertaken by the Board the rules of Te Kauhanganui have been reviewed through consultation and hard work and the recommendations will be considered at this year's annual general meeting.

The Board's tribal and social development strategy that is being developed with participation of marae through Te Kauhanganui is progressing satisfactorily.

The redevelopment of Hopuhopu is underway with the demolition of derelict buildings and refurbishment and painting of existing buildings that will not only improve the visual impact of the complex, but also raise the standard of facilities to satisfy customer services.



The first of the fisheries allocations from Te Ohu Kai Moana have been made to iwi and we look forward to concluding this part of our settlement in due course with TOKM.

Our commercial arm continues to grow as a tribal economic entity with a current asset base of \$235m. Tainui Group Holdings had another strong year achieving a net profit of \$21.4m, an increase of 35% from 2004. Their net operating profit of \$12.4m (before asset realisations) enabled a distribution of \$7.4m to the tribe which is \$1.9m up from last year.

The opening of the retail venture at Te Rapa realised our largest investment to date and shows the impressive progress of Tainui Group Holdings Limited (TGH) in managing the tribe's assets. Novotel Tainui continues to perform well and the proposed building of Ibis Tainui as another inner city accommodation alternative is good news for all.

As a result, the tribe increased tertiary scholarships from \$428,000 in 2004 to \$650,000 in 2005. The Board also introduced a new one-off grant of up to \$100,000 to assist Te Kauhanganui Marae to build or renovate their existing buildings.

The Board would like to acknowledge the TGH Chair and his team for their achievements over the last 12 months. It can be said that the carved pou that greet us at The Base symbolises how business and tangata whenuatanga can comfortably exist side by side. Our challenge is to gather that thread in as well and to always try to enhance that co-existence for the benefit of the stakeholders and our future generations.

Let me take this opportunity to thank my own Board and Te Kauhanganui for their perseverance in what has been overall a productive year with good progress in all areas of the Board's strategic plan. I also commend our staff for their hard work and diligence over the past year servicing the Board in its endeavours.

Finally, as I reflect on the implementation of the strategic plan the Board set in motion, I am mindful of the need to ensure continuity of that work in the next three years. In the upcoming Te Kauhanganui elections I encourage nga Marae to heed advices given of the need for commitment and quality when considering candidates to ensure stellar service to our people as we move into the next decade of development and growth.

*Kia ora mai taatou*  
KINGI PORIMA  
CHAIRMAN



The tenth anniversary of the signing of the Deed of Settlement to the Waikato Raupatu Claim was commemorated at the 39th Koroneihana of Te Arikinui in May this year. The Board's acknowledgement traversed the key components of the settlement and reviewed the achievements made since then.

Ten years ago, Waikato-Tainui entered relatively unknown territory being the first major tribe to settle their claim with the Crown. The settlement was seen as laying the foundations of a sound economic base that would give impetus *"to growth, financial independence, social self-reliance, maintenance of cultural integrity, and investment in the talents of the people."* (Sir Robert Mahuta, 1996)

There were matters of unfinished business such as the settlement of outstanding claims to the Waikato River, west coast harbours and two land blocks; a quality research and development facility, and increasing the land quantum of the settlement.

Education was considered at the time the core business of the tribe. A cornerstone of the settlement was the proposed establishment of Endowed Colleges one each at Auckland and Waikato universities. The Waikato Endowed College was opened in 2000 and five years later, its proper establishment is almost realised.

Ten years on, we can look back over this time and acknowledge the learning curve that we have undergone in going from a people-rich, asset poor tribe, to a younger better educated tribe that is starting to find its feet economically with a prudent commercial arm cautiously growing the assets of the settlement.

The commitment and intent of the Board is to achieve proper establishment of the Endowed College as a fully operational iconic centre of research and development, the continuation of Marae and education grants, the settlement of the outstanding claims, the redevelopment of Hopuhopu as a tribal administration and multi purpose complex, and to increase the land quantum.



## KEY HISTORICAL EVENTS SINCE 1946

1946	Tuurangawaewae Hui – Prime Minister Fraser offers £6,000 per year for 50 years, and £5,000 thereafter in perpetuity. Te Puea agrees to partial settlement. Tainui Maaori Trust Board established	Tribe travels to Wellington to hear passing of the Waikato Raupatu Claims Settlement Act 1995; HM Queen Elizabeth II signs legislation; Nelson Mandela visits Tuurangawaewae
1966	Accession of Te Arikinui Te Atairangikaahu	
1975	Taupiri Maunga returned to Waikato; Waitangi Tribunal established; Tainui Maaori Trust Board files claim for the Waikato River with the Maaori Land Court	1996 Post settlement consultation rounds begin; University of Waikato placed in Pootatau Te Wherowhero title
1978	Tainui Maaori Trust Board annuity assessed at \$15,000 per annum	1997 Investiture of Principal Negotiator, Robert Te Kotahi Mahuta; Consultation rounds continue
1983	Tainui Report	1998 Consultation rounds on new organisational governance structure ends; Wind down / wind up process begins; Tribe chooses the name Te Kauhanganui for its new governance structure and marae as its membership
1985	Waitangi Tribunal Report on the Manukau Harbour	
1987	Tainui Education Strategy; Claim lodged with the Waitangi Tribunal for the land confiscations, the Waikato River, the west coast harbours, and fisheries	1999 Tainui Maaori Trust Board disestablished having completed its task of achieving a settlement of raupatu and setting up a new tribal governance structure; Te Kauhanganui o Waikato Inc formally established as the new governance structure
1988	Tainui Maaori Trust Board supports NZ Maaori Council SOE claim	
1989	Coalcorp case. Court of Appeal finds in favour of Waikato	2000 Endowed College opened to prepare for academic year Tribal litigation
1990	Direct negotiations over raupatu begin with National Government	2002 Te Kauhanganui elections
1992	Sealords settlement	2003 Second term of Te Kauhanganui begins
1993	Vesting of Hopuhopu and Te Rapa in Pootatau Te Wherowhero title; Negotiations continue	2004 Te Kauhanganui approves Deed of Mandate for Co-Negotiators to resolve outstanding claims
1994	Pre-settlement consultations continue; Signing of Heads of Agreement	2005 Te Kauhanganui approves executive name change from Te Kaumaarua to Te Arataura; Crown recognises Deed of Mandate and agrees to begin negotiations on the outstanding claims
1995	Postal Referendum; Marae Training Programmes begin; Signing of Deed of Settlement;	



# LOCATION MAP OF TE KAUHANGANUI MARAE



## CHIEF EXECUTIVE'S REPORT

This report covers the financial period 1 April 2004 to 31 March 2005 and other activities throughout the year.

We are pleased to present an unqualified audit report highlighting the financial position of the Waikato Raupatu Lands Trust. The operational surplus has increased from \$11.3m in 2004 to \$16.1m in 2005 and the tribe's equity has increased from \$209m in 2004 to \$286m in 2005.



HEMI RAU, CEO

The operational performance for the organisational entities tracked budget and was an improvement on the \$500,000 over expenditure reported in 2004. Sales from conferences and minor leases exceeded budget achieving gross sales of \$538,000. Grants distributed by the Waikato Raupatu Lands Trust increased by 58% from \$1.2m in 2004 to \$1.9m in 2005.

The strong financial performance of TGH continues as their investment strategies and the management of the tribes assets outperforms market expectations. Their restructuring process has been completed and their return on assets continues to improve. The Board and staff are acknowledged for their efforts and achievements not just over the last 12 months but also over the last 3 years as they have progressively completed their restructuring programme. TGH sold down its shares in Raukura Moana Fisheries to its iwi partners which contributed significantly to the large decrease in revenue and expenses this year.

### HOPUHOPU DEVELOPMENT ADVISORY COMMITTEE

The Board has approved the renovation and refurbishment programme developed by the Committee for the Hopuhopu complex. A project manager has been appointed to oversee the demolition of several buildings that are no longer useable and to ensure the programme is kept within budget and timeline.



REUBEN RENATA, CARPENTER,  
RENOVATING A BUILDING

### ENVIRONMENT

The Environmental Unit continues to advocate environmental protection, restoration and sustainable development of natural and physical resources within Waikato. Their work during the year included participation in the 2004 review process of the Resource Management Act, improving communication with marae and hapuu on local environmental matters, and building on relationships with councils, developers and regional and national stakeholders to encourage the participation of Waikato-Tainui with these organisations.

Assistance was provided to Waikato marae affected by the proposed new pylon transmission route from Otahuhu to Whakamaru. Assistance was also given to local marae in Huntly to establish a joint working party with Solid Energy to deal with environmental restoration and protection issues.



Support was also provided to a sustainable management environmental research project by Forest Research and CENTOX that investigated methods for determining the effects of pollution on fishes. The research reaffirmed the tribe's position that pollution is having an impact on native biodiversity of the Waikato River.

## INTERNSHIP

In February 2005 the WRTC in collaboration with Osgoode Hall Law School in Toronto, Canada, hosted law graduate Catherine Fagan from McGill University, Canada, for 7-weeks as part of her graduate degree research project. Her research report on Indigenous Co-Management Regimes in Canada offers possible ways that we can learn from the Canadian experience in respect of the Waikato River claim. Her report will contribute to the research base for the outstanding claims.

## FIRST RIGHTS

The Deed of Settlement requires the Crown to first offer to sell certain lands it is disposing of to the WRTC. TGH makes an initial commercial decision whether to purchase the surplus Crown land on behalf of the tribe. If TGH is not interested in that land, then marae/hapuu may consider the opportunity to purchase such land themselves through the first right of refusal process. Monitoring of the process is ongoing and involvement with several cases concerning waahi tapu and potential cultural/social issues on lands subject to disposal by Crown agencies and developers has been part of our work to date.

## CONTRACTS

During the year, the tribal administration managed two Government contracts. He Ara Tika is a Ministry of Education funded programme aimed at improving the participation and achievement rates of students attending local secondary schools. The programme is in its fourth year, with 110 students receiving mentoring support from 30 volunteers and mentors. Since 2002, over 180 students have successfully completed the programme. Waikato-Tainui hosted the National Conference, facilitated and organised numerous waananga and educational programmes.

Te Puni Kookiri funded the Waikato Raupatu Trustee Company Limited to undertake a whaanau development research project. The purpose of the project was to capture a snapshot of whaanau business activity, as a basis of strategising potential support. This reminded us of the resourcefulness of whaanau for supplementing existing income but more importantly is a collaborative effort to meet socio-cultural oriented goals.

Increased demand for the use of the conference facilities here at Hopuhopu has highlighted the need to conclude the renovation programme of the buildings as soon as possible to enable more efficient service to clients. Sport, education and training and development of staff or groups are the most common purposes the complex is used for.

The Ngaa Pae o Te Maaramatanga programme for postgraduates held its second course at the Endowed College this year. Participants are in varying stages of study towards their doctorates.

The teacher training postgraduate course for Maaori teachers run by the Kia Ata Mai Educational Trust is in its second year at the Endowed College. The programme caters for students studying at masters and post graduate diploma level.



The Ministry of Education regional Pouwhakataki (community education) has been based at the Waikato Endowed College since 2001. The role involves networking among early childhood education services, schools, education providers, students and iwi. Whaanau, hapuu and iwi on the workings of the education system, promoting the importance of education, raising the achievement of Maaori students and reinforcing the message *“Te Mana ki te Taumata - Get there with learning”*.

## TAINUI WAKA SPORTS AWARDS

In October last year Waikato-Tainui and Mighty River Power sponsored the inaugural Tainui Waka Sports Awards held at Tuurangawaewae and proved to be an outstanding success. This prestigious event drew our top athletes across the whole spectrum of sport and provided an opportunity for them to be honoured in their chosen fields. The judges were sportspeople of international repute who acknowledged that their task was made difficult because of the high calibre of nominees.

## PUUKAWA

The long term commitment to Tuuwharetoa to provide all the carvings and tukutuku for their whareniui in Puukawa has finally come to fruition. Puukawa is of cultural significance to Tainui as that is where Pootatau was raised as the first Maaori King.

## TUURANGAWAEWAE HOUSE RENOVATIONS

The Board is developing a plan with the Historic Places Trust to renovate and restore Tuurangawaewae House for future tribal use.

## AUCKLAND AIRPORT

Carvings and tukutuku for the Auckland Airport are in the last stages of completion by Waikato-Tainui carvers. These taonga will be gifted to the airport as a result of a Memorandum of Understanding between the airport and Ngaa Marae Toopu. The opening will be held in February 2006.

## TAINUI FESTIVAL 2006

The next Tainui Festival will be held in February 2006 at Hopuhopu. The festival provides an opportunity for everyone to come together in kotahitanga for sport and recreational activity. The Festival Committee is working hard to ensure that everything is well organised so that participation is enjoyed by all.

## MARQUEES

In May last year management purchased marquees and have made them available to marae for tribal hui and events at minimal cost.

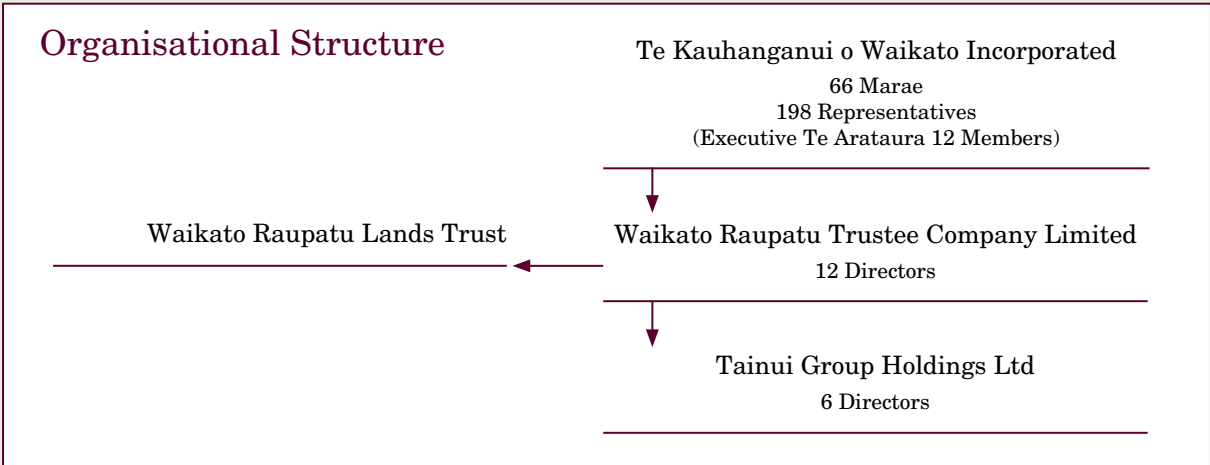


“TE ARA MAUREA O TE HUINGA TANIWHA” KAPA HAKA GROUP, runners-up in the Regional Primary School Competitions 2005

*Kia ora*  
HEMI RAU, CEO



# TE KAUHANGANUI O WAIKATO



Registered as an Incorporated Society in 1999, Te Kauhanganui comprises the 66 marae who signed in support of the 1995 raupatu settlement. Each marae elects three representatives who affiliate to the 33 hapuu named in the Deed of Settlement. Te Kauhanganui elects eleven representatives to Te Arataura (formerly Te Kaumaarua) and the 12th member is appointed by the Head of the Kiingitanga.

As it enters its third term of operation, Te Kauhanganui has had time to consider their rules on what works and what needs improving. To this end, the Board set up an advisory committee to review the rules.

### RULES REVIEW ADVISORY COMMITTEE

The Board facilitated the process of reviewing the rules of Te Kauhanganui by establishing the Advisory Committee who called for submissions on any proposed changes and then arranged a series of consultation hui held between April and October this year. The purpose of these hui were to determine the views of Waikato-Tainui and identify which rules required amendment or change. An analysis of the submissions was carried out and another round of consultation hui was undertaken. The final recommendations will be presented to Te Kauhanganui at the 2005 Annual General Meeting for ratification.

### TRIBAL DEVELOPMENT ADVISORY COMMITTEE

This Committee was established to develop a framework that provides for an appropriate, effective strategic plan for Waikato-Tainui. A series of waananga were held with the standing committees of Te Kauhanganui and kaumaatua to gather their whakaaro to assist with its development and design. The framework will be presented to Te Kauhanganui for ratification.

### POOTATAU TE WHEROWHERO TITLE

The Pootatau Te Wherowhero title is the mechanism set up to protect the title of lands in the tribal estate. The lands are in the name of Te Wherowhero because the lands were pledged to him for protection against sales to Europeans. These pledges have been reaffirmed through the generations. The effect of this title is that lands in its name cannot be sold, alienated, mortgaged. The title is protected by Custodial Trustees who only protect the title, they do not own the land. Any sale of land under this title requires a majority vote of eligible beneficiaries as well as the consent of the Custodial Trustees. Lands placed in Te Wherowhero title include the Waikato University lands, Hopuhopu and Te Rapa.



## OUTSTANDING CLAIMS

The Waikato Raupatu Claims Settlement Act 1995 (WRCS Act) gave effect to a Deed of Settlement between the Crown and Waikato-Tainui dated 22 May 1995, of certain raupatu claims of Waikato-Tainui, as referred to in that Act. This settlement did not include the “excluded claims” as defined in section 8(2) of the WRCS Act.

These excluded claims in section 8(2)(a)(b) are:

- a) (i) The Waikato River (being the claims set out in paragraph A1-5 of the statement of claim dated the 16th day of March 1987); and
  - (ii) The West Coast Harbours, as defined in the Deed of Settlement (being the claims set out in paragraphs C8-9 of the statement of claim dated the 16th day of March 1987); and
- 
- b) Any claims by Waikato to the Wairoa block or the Waiuku block.



CO-NEGOTIATORS TUKOROIRANGI MORGAN AND LADY RAIHA MAHUTA

The Waikato River claim (being part of Wai-30) was filed in the Waitangi Tribunal on 16th March 1987, brought by Robert Te Kotahi Mahuta on behalf of himself, on behalf of Waikato-Tainui, and on behalf of the members of the Tainui Maaori Trust Board and Ngaa Marae Toopu. In respect of the Waikato River, the claimants state that Waikato-Tainui was prejudicially affected by the following acts, policies and omissions of the Crown:

1. *By which the ownership and mana of the Waikato River is denied to Waikato-Tainui.*
2. *By which the waters of the Waikato River is desecrated, polluted, and depleted.*
3. *In failing to recognise and protect Waikato-Tainui fisheries and lands in the Waikato River.*
4. *By which Waikato-Tainui fisheries in the Waikato River have been depleted by pollution, over-fishing, and spiritual desecration.*
5. *In providing a legislative framework for land use planning, water use planning and resource planning which fails to properly take into account Waikato-Tainui concerns for the Waikato River and which is inappropriate for the protection of Waikato-Tainui rights guaranteed by the Treaty.”*

In the Deed of Settlement 1995 the Crown acknowledged that raupatu was a breach of the Treaty of Waitangi and that the claim by Waikato-Tainui in relation to the Waikato River arises as a result of raupatu.

By resolution on 19 June 2004 Te Kauhanganui o Waikato Incorporated appointed Lady Raiha Mahuta and Tukoroirangi Morgan Co-Negotiators for the excluded claims.



By resolutions of September and December 2004 Ngaa Marae Toopu appointed Lady Raiha Mahuta and Tukoroirangi Morgan Co-Negotiators for the excluded claims.

For the past year we have managed to make headway on the outstanding claims. We have a mandate to negotiate the Waikato River claim and further work needs to be done for the west coast harbours and the land blocks. We are currently in discussions regarding the Terms of Negotiations with the Office of Treaty Settlements and once approved by the Minister can be submitted to Te Kauhanganui. In the negotiations Te Kauhanganui is the approval and decision-making body for the achievement of any settlement. The Waikato Raupatu Trustee Company Limited is responsible for facilitating and supporting the negotiations.

The Co-Negotiators have reported in this last year to all Te Kauhanganui, Waikato Raupatu Trustee Company Limited and Ngaa Marae Toopu meetings, 28 Poukai hui, as well as 10 consultation hui requested by marae and hapuu groups.



# WAIKATO RAUPATU TRUSTEE COMPANY LIMITED

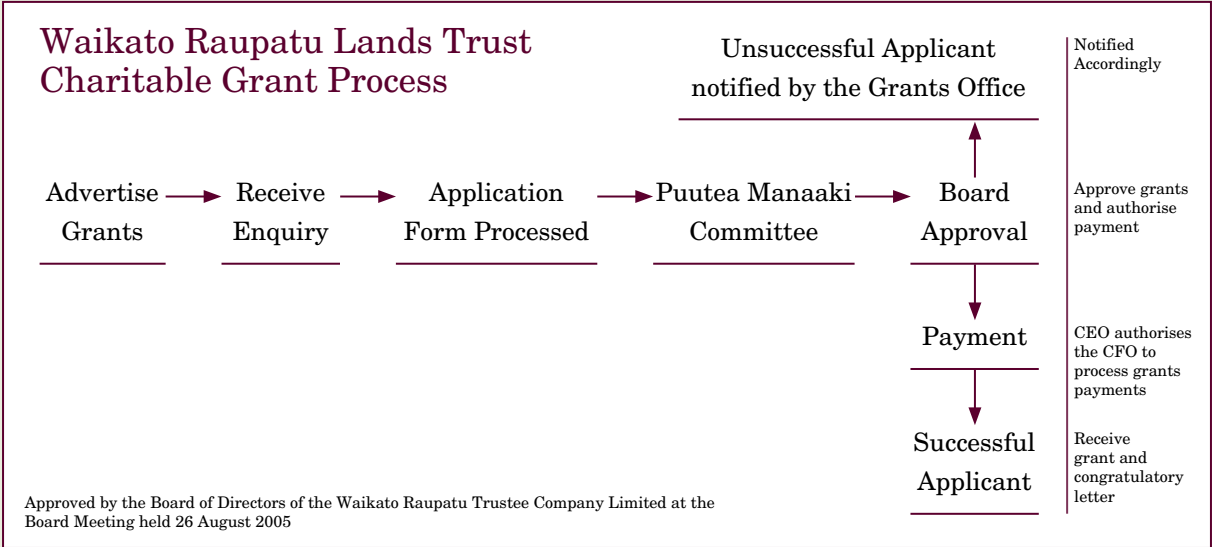
The Waikato Raupatu Trustee Company Limited (WRTCL) is the successor to the Tainui Maori Trust Board and Trustee of the Waikato Raupatu Lands Trust. The company is also the sole shareholder of Tainui Group Holdings Ltd.

## WAIKATO ENDOWED COLLEGE ADVISORY COMMITTEE

In line with the Board’s strategic direction set at the beginning of this year, the Advisory Committee for the Endowed College embarked on an intense work programme to achieve key objectives to ensure that the College is established and fully operational in 2006-2007. This work has involved developing the structural requirements for the College and investigating a range of options for the College programme. Consultation hui have been held to inform, debate and gauge consensus on their direction thus far. Progress is reported regularly to Te Kauhanganui.

## PUUTEA MANAAKI ADVISORY COMMITTEE

This Committee is responsible for ensuring that the Board meets statutory compliance pertaining to the distribution of grants as required by the Deed creating the Waikato Raupatu Lands Trust dated 10 November 1995. This year the Committee endorsed a review of the charitable status of the Trust and as a result policies and procedures were renewed to meet current legal and statutory obligations. The Board also established a new Marae Facilities Grant. The grant process is described below in the following flowchart.



### **HUMAN RESOURCES ADVISORY COMMITTEE**

An Advisory Committee was established to review the job description and key performance indicators of senior management and an Independent Reviewer assisted the Board with this process. The Committee also developed and implemented a new organisational Human Resources Manual which provides an operational framework and guide for both the Board and employees.

### **LEGAL SERVICES ADVISORY COMMITTEE**

This Committee was established to review the provision of legal services and the efficient use of legal advice for progressing the organisation's objectives. The Committee completed its brief and was recently disestablished but maintains an informal monitoring role.

### **FISHERIES ALLOCATION ADVISORY COMMITTEE**

This Maaori Fisheries Act 2004, outlines a roadmap for iwi authorities to follow to enable Te Ohu Kai Moana to distribute the fisheries assets. The Board has established a Fisheries Allocation Advisory Committee who will guide the process through the various legislative requirements and timeframe to ensure the Waikato-Tainui fisheries assets are received in 2006.



# WAIKATO RAUPATU LANDS TRUST

## OBJECTIVE

The Waikato Raupatu Trustee Company is the Trustee of the Waikato Raupatu Lands Trust. The key objective of the Waikato Raupatu Lands Trust is to apply Trust property for Charitable Purposes in the interests of all Waikato as defined in the first schedule of the Deed creating the Waikato Raupatu Lands Trust. This includes education, cultural and social welfare, the relief of aged or poor members of Waikato or those under disability, the promotion of community health.

The Board commissioned an independent review of the current grants distributed by the Waikato Raupatu Lands Trust to ensure continued compliance with its current tax-exempt status. As a result, the Board approved new grant policies and procedures for education, relief of poverty, advancement of education and those beneficial to the community.

## TRIBAL REGISTRATION

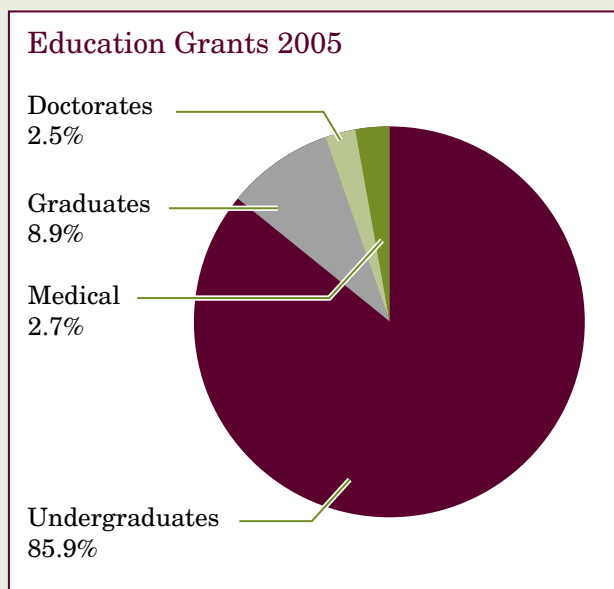
The register has doubled since the 1995 settlement with 46,236 enrolments at 31 March 2005, although the office has received over 51,000 registrations. Some applications require further information and will be added to the validated register upon processing.

Geographically, the majority of tribal members continue to reside within the urban centres of Auckland and Waikato (85%). Similar to other Maaori population trends, approximately 70% of the tribal population are under the age of 30 years and only 5% are over the age of 65 years old.

Communicating with our tribal members is an important function as they not only want to know what's going on, but often also want to have their say. The database is used to contact our people by posting to approximately 12,000 households each quarter the tribal newsletter Te Hookioi, the annual report and notices of Marae meetings and other tribal hui.

## EDUCATION GRANTS

It is pleasing to note the increase in tribal members pursuing higher qualifications and across a variety of courses. It is noticeable that fewer students continue on with their graduate studies for either a masters or doctoral qualification however they will always have that option in the future. The number of medical students is slightly higher than previous years but still remains a relatively low percentage of the overall scholarships awarded this year. *See pages 21 - 32 for the list of Education Grants*



## MARAE GRANTS

All Te Kauhanganui Marae are listed in accordance with the 5th Schedule of the Deed Creating the Waikato Raupatu Lands Trust and are entitled to receive an annual dividend. However some Marae choose not to receive their annual grant for various reasons e.g. Tahunakaitoto and Tikirahi. Waimakariri Marae and Okarea Marae have been added since 1995. Te Poho o Tanekena (previously known as Oopuatia Marae) continue to receive their annual Marae dividend. *See Page 33 for the list of Marae Grants*



## TRIBAL GRANTS

Tribal grants were also distributed to assist with waananga to enhance and ensure tribal knowledge is maintained and learnt at key events such as the annual Koroneihana, Poukai and Regatta. The Waikato Raupatu Lands Trust has also assisted kaumaatua and kuia to hold waananga that supports te reo, waiata and tikanga at local Marae and the Regional Tainui Kapa Haka events for Tainui primary and secondary schools.

## MARAE FACILITIES GRANT

The Board is committed to assisting all Te Kauhanganui marae to build and renovate their current facilities. To achieve this, an annual one-off maximum grant of \$100,000 was introduced in 2005 for the next 10 years to assist each marae with their respective projects. This replaced the previous marae capitalisation policy. Marae are not required to pay back the grant and they will continue to receive their annual marae dividend.

## TRIBAL ADMINISTRATION

The strong financial performance and higher profits derived from our commercial arm enables the tribal authority to function and operate at a higher level compared to previous years. Staff numbers have remained consistent over the last twelve months with just one addition to the team.

Management continues to service the numerous Advisory Committees and Sub-Committees that have been established to deal with specific tasks and to assist the Board in their work towards implementation of the strategic direction endorsed by Te Kauhanganui to meet the cultural, social and economic needs of our people.

The Board and management are committed to the key goals that govern the work ethic of the organisation:

- Goal 1 To uphold and support the Kiingitanga
- Goal 2 To protect, advance, develop and unify the interests of Waikato (which incorporates the principles of unity, the retention of the tribal base in collective ownership and cooperation amongst peoples)
- Goal 3 To achieve settlement of the outstanding claims to the Waikato River, the West Coast Harbours and Maioro and Wairoa land blocks
- Goal 4 To protect and prudently manage the tribal assets, to ensure sustained growth and tribal development and to effectively distribute benefits to the tribe
- Goal 5 To develop a tribal strategy that identifies and meets the people's cultural, social and economic and priorities and needs



# EDUCATION GRANTS

## AARUKA

Rhonda TUAUPIKI KERR ..... Diploma in Social Work ..... Te Waananga o Aotearoa

## AOTEAROA

Sara RANGITUTIA ..... Bachelor of Nursing ..... Wintec

Michael TAIAPA ..... Bachelor of Arts - Honours ..... Waikato University

## HOE-O-TAINUI

Tracey ARTHURS ..... Bachelor of Education ..... Victoria University

Susan DAVIS ..... Diploma of Information Technology ..... Wintec

Teresa FINAU ..... Bachelor of Nursing ..... Waiariki Polytechnic

Adriana VAN DER SWAN ..... Bachelor of Applied Social Sciences ..... Wintec

## HORAHORA

Dougal THORBURN ..... Bachelor of Medicine & Chemistry ..... Otago University

Louis BIDOIS ..... Bachelor of Applied Social Sciences ..... Wintec

Georgina FAULKNER ..... Bachelor of Nursing ..... Wintec

Jordon FRIEND ..... Bachelor of Commerce ..... Auckland University

Emma TUMOHE ..... Bachelor of Education ..... Waikato University

Mereana TUMOHE ..... Bachelor of Health Sciences ..... Otago University

## HUKANUI

Eileen CLARKE ..... Doctorate of Philosophy ..... Auckland University

Lilliana CLARKE ..... Post Graduate Diploma in Maaori  
Resource Management ..... Massey University

Taipua ABRAMS ..... Diploma in Sport & Recreation ..... Bay of Plenty Polytechnic

Cherie ASTON ..... Bachelor of Business ..... Southern Cross University  
Australia

Darlene BROWN ..... Bachelor of Arts ..... Canterbury University

Crystal CLARKE ..... Bachelor of Business ..... AUT

Grant ELMES ..... Graduate Diploma in Business Studies ..... Massey University

Isobel HEKE ..... Bachelor of Education ..... Te Waananga o Aotearoa

Kelly HOPA ..... Bachelor of Fine Arts ..... Universal College of  
Learning - Wanganui

Te Aranga HOPA ..... Bachelor of Communication Studies ..... Waikato University

Kieran McKEOWN ..... Bachelor of Social Sciences ..... Victoria University

Shannan McKEOWN ..... Bachelor of Law & Commerce ..... Victoria University

Nataliee McKILLOP ..... Bachelor of Arts ..... Te Waananga o Aotearoa

Dona Lucia MARTIN ..... Diploma in Social Work ..... Te Waananga o Aotearoa

Renee NGATAI ..... Bachelor of Law ..... Waikato University

Mark ORMSBY ..... Bachelor of Arts - Honours ..... Waikato University

Amanda TAYLOR ..... Bachelor of Social Sciences ..... Waikato University

Kate THOMPSON ..... Bachelor of Law ..... Victoria University

Anthony WARUHIA ..... Bachelor of Applied Social Sciences ..... Wintec

Charlotte WILDS ..... Bachelor of Social Sciences ..... Edith Cowan University

Carmen WILSON ..... Bachelor of Applied Social Sciences ..... Wintec

## KAHOTEA

Tony TARATU ..... Masters in Social Policy ..... Otago University

Ana BIDOIS ..... Bachelor of Law & Arts ..... Victoria University



## EDUCATION GRANTS (continued)

Alice COONEY	Bachelor of Nursing	Bay of Plenty Polytechnic
Kiriwai FLAVELL	Diploma of Maaori and Management	Te Waananga o Raukawa
Casey KAA	Bachelor of Communication Studies	AUT
Lynnell KEUNG	Bachelor of Optometry	Auckland University
Lincoln TE KANAWA	Whakairo Level 5	Te Waananga o Aotearoa
Rion TUHORO	Bachelor of Electronic Communication	Waikato University
Tazmin TUHORO	Bachelor of Electronic Communication	Waikato University
John WEST	Bachelor of Engineering	Massey University

### KAI-A-TE-MATA

Tarei PATU	Masters in Maaori and Management	Te Waananga o Raukawa
Michael ROSS	Masters in Public Policy	Victoria University
Jacqueline EDWARDS	Diploma in Maaori Studies	Te Waananga o Raukawa
Brett ROSS	Bachelor of Business	Open Polytechnic
Yvonne TAURA	Bachelor of Environmental Studies	Te Waananga o Awanuiarangi
Kataraina YOUNG	Bachelor of Education	Dunedin College of Education

### KAITUMUTUMU

Marie CLARKE	Bachelor of Nursing	Wintec
Rebecca CLARKE	Bachelor of Social Sciences	Waikato University
Pirirongo HETET	Bachelor of Law & Arts	Waikato University
Tennille HILL	Bachelor of Management	Waikato University
Jasmine MARSH	Diploma in Social Work	Te Waananga o Aotearoa
Anita PAKI	Bachelor of Applied Sciences	Massey University
Kylee PAKI	Bachelor of Communication Studies	Waikato University
Tahauriki PAKI	Diploma in Information Technology	Wintec
Donald PARKINSON	Diploma in Social Services	Te Waananga o Aotearoa
Lamayne POHUTUHUTU	Computing Court Level 2 & 3	Tafe NSW

### MAKAURAU

Jennifer LEE	Doctorate of Philosophy	Auckland University
Qiane CORFIELD	Bachelor of Communication	AUT
Mereri HEKE	Diploma in Maaori Studies	Te Waananga o Aotearoa

### MAKETUU

Tui Anne BISHOP HAY	Certificate of Te Reo	Wintec
Jolleen HOWARD	Bachelor of Education	Victoria University
Justine PARNELL	Bachelor of Social Sciences	Waikato University
Shirley TUTEAO	Bachelor of Arts	Waikato University

### MANGATANGI

Awhina POMPEY	Diploma of Maaori and Management	Te Waananga o Raukawa
---------------	----------------------------------	-----------------------

### MANGATOATO

Robert JOSEPH	Doctorate of Philosophy	Waikato University
Janine ROA	Masters of Arts	Waikato University
Gloria BLAIR TE HUIA	Bachelor of Health Sciences	AUT
Allyson COLLINS	Business Administration/Practical Ed	Private Institution
Christina HEMARA	Bachelor of Social Sciences	Waikato University
Haydene MANIAPOTO	Bachelor of Education	Waikato University
Zane ROA	Bachelor of Maaori Studies	Waikato University



Angela ROBIN	Certificate of Te Reo	East. Institute of Technology
Jacqueline SMITH	Bachelor of Maaori Administration	Te Waananga o Raukawa
Wiquini STOCKMAN	Diploma of Social Work	Te Waananga o Aotearoa
Awanui TE HUIA	Bachelor of Arts in Te Reo & Psychology	Victoria University
Cynthia WHITE	Bachelor of Consumer & Applied Sciences	Otago University

#### MAUNGATAUTARI

Tuwakaea DANIEL	Post Graduate Certificate in Public Policy	Victoria University
Kyrin BHULA	Bachelor of Law, Arts & Commerce	Canterbury University
Melisa CHASE	Bachelor of Education	Te Waananga o Aotearoa
Wendy CLARK	Bachelor of Nursing	Wintec
Poto DAVIES	Bachelor of Health Sciences	AUT
Manu DONAGHY	Bachelor of Health Sciences	Otago University
Jayne DONKIN	Bachelor of Science	Waikato University
Phillip GREEN	Diploma in Business	Tairāwhiti Polytechnic
Hinerangi KARA	Bachelor of Arts	Waikato University
Stephanie KARA	Bachelor of Applied Social Sciences	East. Institute of Technology
Tim Taiapa KARA	Advanced Certificate in Maaori Language	Te Waananga o Awanuiarangi
Kate LANDERS	Bachelor of Applied Sciences & Communication	Otago University
Simon LANDERS	Bachelor of Management Studies-Honours	Waikato University
Joanne MASON WAIKAI	Certificate of Maaori Immersion	Te Waananga o Awanuiarangi
Katrina MIDDLEMISS	Diploma of Naturopathy	Naturopathic College of NZ Ltd
Stanley NIKARA	Bachelor of Arts	Waikato University
Kahurangi TAPSELL	Bachelor of Resources & Environment	Massey University
Trudy TAPSELL	Bachelor of Applied Social Sciences	Wintec
Tui TENGORE KING	Diploma in Social Work	Te Waananga o Aotearoa

#### MAUREA

Vincent HAPI	Post Graduate Diploma in Interpreting	Waikato University
Polly ALBERT de GARNHAM	Master in Social Work	Massey University
Alex HOPKINS	Masters of Arts	Waikato University
Ann EPIHA	Bachelor of Environmental Studies	Te Waananga o Aotearoa
Mariana HAPI	Bachelor of Maaori Performing Arts	Te Waananga o Aotearoa
David HEMANA	Certificate in Te Reo Maaori	Wintec
Richard IWIHORA	Certificate in Technology	Wintec
Pahou WHAKARURU	Bachelor of Arts, Maaori & Screen Media	Waikato University

#### MOOKAI KAINGA

Adam BOON	Post Graduate Diploma in HR	Waikato University
Miria KALMAN	Certificate in Art	Waiariki Polytechnic
Clinton RICKARDS	Bachelor of Law	Auckland University
Dionne RICKARDS	Bachelor of Commerce & Law	Auckland University
Donna TUWHANGAI	Bachelor of Arts	Waikato University

#### MOOTAKOTAKO

Shane EDWARDS	Doctorate of Philosophy	Massey University
Patricia JONES	Masters in Indigenous Studies	Te Waananga o Awanuiarangi
Tahi RANGIAWHA	Bachelor of Arts	Waikato University
Brenda TAIRAKENA	Bachelor of Nursing	Wintec



## EDUCATION GRANTS (continued)

### NGAA HAU E WHAA

Te Whakoha ASTLE	Diploma in Maaori & Management	Te Waananga o Raukawa
Jan Marie HENRY	Diploma in Maaori & Management	Te Waananga o Raukawa
Raemon MATENE	Bachelor of Education	Waikato University
Eliza RIKA HEKE	Bachelor of Health Sciences	Manukau Polytechnic
Kiri WILSON	Diploma in Maaori & Management	Te Waananga o Raukawa

### NGAATAIERUA

Rereata BENIONI	Certificate of Travel	Unitech New Zealand
Karlene CLARKE	Bachelor of Health Sciences	AUT
Janine FOSTER	Diploma of Maaori and Management	Te Waananga o Raukawa
Kaiwhare HOWE	Bachelor of Tourism - Honours	Waikato University
Joanna KATIPA	Diploma of Maaori and Management	Te Waananga o Raukawa
Tania POROA	Bachelor of Applied Sciences Medical Radiation	Queensland University
Cushla RAPANA	Diploma of Maaori and Management	Te Waananga o Raukawa
Terena WARA	Bachelor of Law	Waikato University

### NGAATIRA

Harko BROWN	Masters of Sport & Leisure Studies	Waikato University
Lincoln NICHOLLS	Bachelor of Medicine & Chemistry	Otago University
Tony THOMPSON	Bachelor of Science	Otago University

### OKAREA

Fred ANDREWS	Bachelor of Applied Social Sciences	Wintec
--------------	-------------------------------------	--------

### OMAERO

Sireena KAUI	Diploma of Business	Waiariki Polytechnic
Hinemoa MATTHEWS	Diploma of Maaori and Management	Te Waananga o Raukawa
Polly KOKIRI	Diploma of Maaori Counselling	Wintec
Maadi KING	Diploma in Toi Paemataua	Te Waananga o Aotearoa

### OOKAPU

Edward AINSLEY	Bachelor of Arts, Maaori & Geography	Waikato University
Jackson MAHARA	Bachelor of Arts	Waikato University
Te Kira LAWRENCE	Bachelor of Arts & Education	Massey University
Tasha Lee MAHARA	Bachelor of Education	Te Waananga o Aotearoa
Ripo KAHAKI	Bachelor of Nursing	Wintec
Lesley BRADSHAW	Bachelor of Nursing	Whitireia Polytechnic
Pauline MAHARA	Certificate in Te Raranakura	Te Waananga o Raukawa
Amy MAHU	Bachelor of Education	Whitireia Polytechnic
Vyon WILSON	Certificate in Health Studies	Wintec
Parekawhia MAHARA	Diploma in Hospitality Management	NZ Management Academies
Sheree ANDERSON	Graduate Diploma in Accounting	Waikato University

### OORAEROA

Maraea VAN GENT	Masters of Philosophy in Social Work	Massey University
Ferris CAIG	Bachelor of Nursing	Southern Institute of Tech.
Sally KOIA	Diploma of Maaori & Management	Te Waananga o Raukawa
Sally ORMSBY	Bachelor of Management Studies	Waikato University
Niira TE MOANA	Bachelor of Nursing	Unitech



Priscilla TE MOANA	Bachelor of Health Sciences	Massey University
Josephine THOMPSON	Diploma of Maaori & Management	Te Waananga o Raukawa
Kararaina THOMPSON	Bachelor of Education	Te Waananga o Raukawa
Pania THOMPSON	Certificate in Bi-Cultural Social Service	Manukau Polytechnic
Richard THOMPSON	Diploma of Maaori & Management	Te Waananga o Raukawa
Tracey THOMPSON	Diploma of Maaori & Management	Te Waananga o Raukawa
Angeline VAN GENT	Diploma of Music Production	Bay of Plenty Polytechnic
Jade WATI	Diploma in Education	Manukau Institute of Tech.

#### OWAIRAKA

Kris BAIRD	Te Timatanga Hou	Waikato University
Amy CHESTNUTT	Bachelor of Arts & Law	Auckland University
Ruakaka HETA	Diploma of Information Technology	Wintec
Nuia HONA	Bachelor of Hapu Development	Te Waananga o Raukawa
Suzanna MARSHALL	Bachelor of Nursing	Manukau Polytechnic
Kapua QUINN	Bachelor of Nursing	Whitireia Polytechnic
Kelly TAINGAHUE	Bachelor of Arts	Waikato University

#### POIHAAKENA

Kahu KING TAIPUA	Bachelor of Business Administration	Te Waananga o Aotearoa
Savita MARSH	Bachelor of Business	Wintec
Moana NUMANGA	Bachelor of Law	Waikato University
Cindy TAIRAKENA	Diploma in Early Childhood Teaching	Open Polytechnic

#### POOHARA

Tupu WILLIAMS	Doctorate of Philosophy	Massey University
Rondase EDGECOMBE	Diploma in Oranga Hinengaro	Te Waananga o Raukawa
Rosie MITCHELL	Bachelor of Applied Communication	Manukau Polytechnic
Wahineata SMITH	Bachelor of Arts & Physical Education	Otago University
Elizabeth TAUROA	Bachelor of Arts	Auckland University
Hema TAUROA	Bachelor of Sport & Leisure Studies	Waikato University
Kelly TAUROA	Diploma in Teaching Early Childhood Ed	Waiariki Polytechnic
Sierra TAUROA	Bachelor of Science	Otago University
Hamiora WEHIPEIHANA	Bachelor of Arts	Waikato University
Kylie WIHONGI	Bachelor of Nursing	Wintec
Thomas WINIKEREI	Bachelor of Maaori Management	Te Waananga o Raukawa
Angela WOODS	Diploma in Maaori Administration	Te Waananga o Raukawa

#### PUUREKIREKI

Hariru ROA	Masters of Arts	Auckland University
Rhys CLARE	Diploma of Business	AUT
Cameron KEEPA	Bachelor of Health Sciences	AUT
Patsy KING	Diploma in Teaching Early Childhood Education	Wintec
Tania KING	Certificate in Maaori Immersion	Te Waananga o Awanuiarangi
Samantha NIX	Bachelor of Arts	Victoria University
Jacob ORMSBY	Diploma in Bible Studies	Bible College New Zealand
Anita SMITH	Bachelor of Medicine & Chemistry	Adelaide University
Samuel STEPHENS	Bachelor of Commerce & Education	Victoria University
Moana TURNER	Bachelor of Arts	Waikato University



## EDUCATION GRANTS (continued)

### RAAKAUNUI

Emma RITCHIE	Bachelor of Dental Surgery	Otago University
Maude GREEN	Graduate Diploma in Education	Wintec
Ashley CAMPBELL	Diploma in Business Studies	Wintec
Langree JENKINS	Certificate in Advanced Travel Studies	Manukau Polytechnic
Maude MITA TUHEKE	Diploma in Maaori Counselling	Te Waananga o Raukawa
Kathryn SCOTT	Bachelor of Arts & Law	Christchurch College of Education
Sheree STANLEY	Diploma in Teaching Early Childhood Ed	Wintec
Gardenia TE KANI	Bachelors of Commerce & Administration	Victoria University
Polly UERATA	Diploma in Maaori & Administration	Wintec

### RAUNGAITI (WAHAROA)

Queenie ALIIMATAFITAFI	Bachelor of Applied Social Sciences	Wintec
Jacqueline GILLETT	Diploma in Poumanawa	Te Waananga o Raukawa
Billie GILLETT KATI	Certificate in Matauranga Oranga	Te Waananga o Raukawa
Raewyn GRAHAM	Bachelor of Nursing	Wintec
Steven GRAHAM	Bachelor of Arts & Maaori	Te Waananga o Raukawa
Cecil HEKE	Diploma in Maaori Studies	Te Waananga o Raukawa
Te Waimarie KAPEA	Bachelor of Arts	Waikato University
Warren KATI	Certificate in Matauranga Rorohiko	Te Waananga o Raukawa
Ralph KAUKAU	Bachelor of Pou Oranga Hinengaro	Te Waananga o Raukawa
Te Ata KING	Bachelor of Management & Law	Waikato University
Celia LIND	Certificate in Garment Technology	New Zealand Institute of Fashion Technology
Joanne MARSH	Diploma in Oranga Hinengaro	Te Waananga o Raukawa
Karl NANIC	Bachelor of Arts	Griffith University
Joshua RAWIRI	Diploma in Social Services	Te Waananga o Raukawa
Michael SHALDERS	Certificate in Tour Guiding	New Zealand Education Tours
Tomairangi SMITH	Bachelor of Arts & Maaori	Waikato University
Ruth TUHAKARAINA	Certificate in Te Aho Tapu	Wintec
Sandra TUHAKARAINA	Diploma in Oranga Hinengaro	Te Waananga o Raukawa
Rauroha WHARAWHARA	Bachelor of Applied Social Sciences	Wintec
Erin WILSON	Bachelor of Law	Waikato University
Farrah Lee WILSON	Diploma in Oranga Hinengaro	Te Waananga o Raukawa
Marsden WILSON	Bachelor of Arts	Waikato University
Natalie WILSON	Diploma in Oranga Hinengaro	Te Waananga o Raukawa
Awhina WITIKA	Certificate in Maaori Business	Te Waananga o Raukawa
Taunaha WITIKA	Certificate in Maaori Social Services	Te Waananga o Raukawa
Debbie YATES	Diploma of Business	Waiariki Polytechnic

### RERETEWHIOI

Jacqueline POUTU	Bachelor of Neuroscience Biology	Otago University
Bryce TURNER	Post Graduate Diploma in Maaori	Waikato University

### RUKUMOANA

Shadrich ROLLESTON	Doctorate of Philosophy	Auckland University
Leigh MANARANGI	Graduate Diploma in Teaching	Waikato University
Tia GREENAWAY	Bachelor of Music - Honours	Victoria University



Theresa HEYWOOD	Bachelor of Applied Social Sciences	Waiariki Polytechnic
Jaime McSHANE	National Certificate in Motor Engineering	Bay of Plenty Polytechnic
Michael RAMEKA	Bachelor of Education, Sport & Leisure St	Waikato University
Shaun RAMEKA	Bachelor of Education, Sport & Leisure St	Waikato University
Wallace RAMEKA	Bachelor of Law	Victoria University
Shiloh TUA	Diploma of Cultural Travel	AUT

#### TAHUNAKAITOTO

Cynthia BELK	Bachelor of Education & Maaori	Auckland University
Issac Moses BROWN	Diploma in Aviation Science	Nelson Polytechnic
Heni KIMURA	Diploma of Sport & Recreation	AUT
Bronson LOLESI	Certificate in Health Sceince	Auckland University
Deborah LOLESI	Bachelor of Education	Auckland University
Gabrielle O'CONNOR	Advanced Diploma in Maaori Visual Arts	Tairawhiti Polytechnic
Lorraine RATU	Diploma of Management	Te Waananga o Raukawa

#### TANGIRAU (WAIKERI)

Te One HAMUERA	National Certificate in Embalming	Wellington Polytechnic
Percy JOSEPH	Diploma in Toi Paematua Whakairo	Te Waananga o Aotearoa
Dianne KOHU	Certificate in Management	Bay of Plenty Polytechnic

#### TANGOAO (TANIWHA)

Jaclyn FALWASSER	Bachelor of Education	Waikato University
Carlie HOWE	Bachelor of Arts Media & Theatre	Victoria University
Preva JACKSON	Diploma in Information Technology	Northland Polytechnic
Charles NEPE	Bachelor of Education	Massey University
Bana PURU	Bachelor of Nursing	Wintec
Ngawini WANAKORE PURU	Bachelor of Applied Social Sciences	Wintec

#### TAUHEI

Karleen PURIRI	Diploma in Photography	Southbank Institute - Australia
Tammy TURNER	Diploma in Design Studies	Te Waananga o Aotearoa

#### TAUPIRI

Lisa Maree HOPA	Bachelor of Arts & Physical Edcuation	Otago University
Jeremy POURAU	Bachelor of Communication Studies	Waikato University

#### TAURANGANUI

Rangipipi BENNETT	Diploma in Maaori Management	Te Waananga o Raukawa
Sonia TAUPO	Certificate in Toi Harakeke	Wintec
Braden TE AO	Bachelor of Health Sciences	AUT

#### TE AWAMAARAHU

Shirley CLARK	Maaori Studies	Waikato University
Karla KEREOPA	Bachelor of Law	Waikato University
Lani KEREOPA	Bachelor of Arts	Waikato University
Richard KEREOPA	Diploma of Art & Design	Waiariki Polytechnic
Whetu MIDDLETON	Bachelor of Science	Waikato University
Dollarina O'SULLIVAN	Diploma of Art & Design	Waiariki Polytechnic



## EDUCATION GRANTS (continued)

May TARAPA	Diploma of Maaori & Management	Te Waananga o Raukawa
Tutekiha TUPAEA	Diploma in Management	Te Waananga o Raukawa

### TE ITI-A-HAUAA

Aliana WHEKI	Bachelor of Arts	Otago University
Trudy WILSON	Diploma in Oranga Hinengaro	Te Waananga o Raukawa

### TE KAHAROA (ARAMIRO)

Makereta TURINUI	Masters of Arts	Waikato University
Louisa MARSHALL	Diploma in Poumanawa	Te Waananga o Raukawa
Kathy TURINUI	Diploma in Maaori Counselling	Wintec
Maurice WILSON	Certificate in Tohu Maruata	Te Waananga o Aotearoa

### TE KAURI

Aja CLARK TRINDER	Graduate Diploma in Teaching	Christchurch College of Education
George BERRYMAN	Diploma in Ataarangi	Te Waananga o Awanuiarangi
Katrina COFFEY	Bachelor of Social Work	Newcastle University
Phillippa TARAWHITI	Diploma in Ataarangi	Te Waananga o Awanuiarangi
Judith WHAREKURA	Bachelor of Applied Social Sciences	Te Waananga o Aotearoa

### TE KOOPUA

Chesna AMSTAD	Certificate in Poumanawa	Te Waananga o Raukawa
Aisha ROBERTS	Bachelor of Media Arts	Wintec
Harley STIRLING	Bachelor of Health Sciences	Otago University
Gary TE RUKI	Bachelor of Maaori	Anamata Training Est.

### TE KOORAHA

Ivan KANA	Bachelor of Sport & Leisure Studies	Waikato University
Tina REWI	Bachelor of Nursing	Wintec
Beverly REWI WETINI	Bachelor of Nursing	Wintec

### TE KOTAHITANGA

Kevin JAMES	Post Graduate Diploma in Education	Waikato University
Tangiwai REWI	Masters of Arts Indigenous Studies	Otago University
Denise EWE	Bachelor of Arts - Honours	Auckland University
Brenda JENKINS	Bachelor of Education	Auckland University
Sandie SHAW	Diploma in Maaori & Management	Te Waananga o Raukawa
Selwyn SHAW	Diploma in Maaori & Management	Te Waananga o Raukawa
Jean WILKINSON	Diploma in Maaori & Management	Te Waananga o Raukawa

### TE OHAAKI

Jonni KOIA	Doctorate of Philosophy	Waikato University
Joellene CROSSLAND	Bachelor of Education	Waikato University
Moana HAPETA	Advanced Certificate in Maaori Language	Te Waananga o Awanuiarangi
Charntel PAKI	Bachelor of Sport Exercise	Brigham Young University, Hawaii
Raquel PAKI	Bachelor of Sport Exercise	Brigham Young University, Hawaii
Aramoana PAKURIA	Bachelor of Education	Waikato University



Robyn PERICH .....	Bachelor of Maaori Education .....	Wintec
Michele SHASKEY .....	Bachelor of Media Arts .....	Wintec

#### TE PAPAOROTU

Tuki TE REO .....	Graduate Diploma in Te Reo Maaori .....	Massey University
Dayna AMARU .....	Bachelor of Education .....	Auckland University
Pepa ANDERSON .....	Bachelor of Science & Technology .....	Waikato University
Norman CLOVER .....	National Certificate in Tourism & Travel .....	Practical Education Institute (NZ) Ltd
Violet FINAU .....	Diploma in Paemataua Whakairo .....	Te Waananga o Aotearoa
Jasmine KINGI .....	Bachelor of Nursing .....	Wintec
Talia KINGI .....	Bachelor of Computer Graphic Design .....	Waikato University
Ayeesha PIHAMA .....	Bachelor of Education .....	Waikato University
Jasmine RAMSDEN .....	Diploma of Marine Studies .....	Bay of Plenty Polytechnic
Anthony ROIGARD .....	Bachelor of Health Sciences - Physio .....	Auckland University
RhondaMae SAMUELS .....	Bachelor of Maaori & Administration .....	Te Waananga o Raukawa
Daniel TAIPUA .....	Bachelor of Arts - Honours .....	Auckland University
Victoria WATENE .....	Certificate of Toi Paemataua Whakairo .....	Te Waananga o Aotearoa
Jade WINTER BEAZLEY .....	Bachelor of Fine Arts .....	Auckland University

#### TE PAPATAPU

John GILLETT .....	Bachelor of Sport & Recreation .....	Wintec
--------------------	--------------------------------------	--------

#### TE PUEA

Simone ALLBON .....	Bachelor of Design (Visual Communication) .....	Massey University
Astrid BEAZLEY .....	Bachelor of Medicine & Chemistry .....	Auckland University
Benjamin KAREKO .....	Bachelor of Maaori .....	Te Waananga o Raukawa
Margaret SMITH .....	Bachelor of Maaori Immersion Teaching .....	Te Waananga o Awanuiarangi

#### TE TAUMATA (PAARAAWERA)

Gregory HAUMAHA .....	Post Graduate Diploma in Teaching .....	Bethlehem Institute of Ed.
Antony CROWLEY .....	Post Graduate Diploma in Teaching .....	Waikato University
Maree BREWER .....	Certificate of Maaori & Pacific Development .....	Te Waananga o Aotearoa
Rangitaia CROWLEY .....	Bachelor of Applied Social Sciences .....	Wintec
Lisa RAKATAU .....	Certificate of Maaori Immersion .....	Te Waananga o Awanuiarangi
Maxiene REIRI .....	Diploma in Maaori Counselling .....	Wintec
Gaylene ROBERTS .....	Bachelor of Iwi Environment Management .....	Te Waananga o Aotearoa
Tania SPRINGER ANDERSON .....	Bachelor of Education .....	Te Waananga o Aotearoa
VikiLee SPRINGER TAPATAHI .....	Bachelor of Education .....	Te Waananga o Aotearoa
Marianne TE TAU .....	Bachelor of Nursing - Honours .....	Otago Polytechnic

#### TE TIHI-O-MOERANGI (MAKOMAKO)

Verbina KOPA REWHA .....	Graduate Diploma in Teaching .....	Wellington College of Education
Willie BEATTIE .....	Bachelor of Technology .....	Massey University
Samantha CROSSMAN .....	Bachelor of Education .....	Waikato University

#### TE TOKANGANUI-A-NOHO

Eleanor REGELING .....	Bachelor of Medicine & Surgery .....	Auckland University
Murray TE AHO .....	Masters of Science (Earth) .....	Waikato University



## EDUCATION GRANTS (continued)

Te Ao CURTIS THOMSON	Diploma in Maaori Studies	Te Waananga o Raukawa
Tania KEARNS	Bachelor of Education	Te Waananga o Aotearoa
Pikinui MANAWAITI	Diploma in Ataarangi	Te Waananga o Awanuiarangi
Michelle ORMSBY	Bachelor of Law	Waikato University
Hohepa RAUPUTU	Bachelor of Management Studies	Waikato University
Adam SEARANCKE	Bachelor of Science	Waikato University
Heeni TANE	Bachelor of Social Sciences	Waikato University
Adam TE KANAWA	Bachelor of Arts	Waikato University
William TE KANAWA	Bachelor of Maaori & Pacific Development	Waikato University
Ellen WEHI	Bachelor of Education	Waikato University

### TIKIRAHĪ

Awhitu RANGIAWHA	Diploma in Maaori & Management	Te Waananga o Raukawa
------------------	--------------------------------	-----------------------

### TUURANGAWAEWAE

Marama MURU LANNING	Doctorate of Philosophy	Auckland University
Nepia MAHUIKA	Masters of Arts - Honours	Waikato University
Love RHIND	Masters in Library Studies	Victoria University
Puawai ANNAS	Bachelor of Nursing	Wintec
Richard BEDDIS	National Certificate in Electricity	Wintec
Paul BICKERTON	Bachelor of Commerce	Auckland University
Sophia BICKERTON	Bachelor of Property	Auckland University
Alexander BRADSHAW	Bachelor of Arts	Waikato University
Marama EMERY	Bachelor of Performing Arts	Toi Whakaari New Zealand Drama School
Marama HAGGIE	Bachelor of Business	Queensland University
Nathan HAGGIE	Bachelor of Arts	Waikato University
Matutaera HERANGI	Bachelor of Media Arts	Wintec
Toni Aotea HERANGI	Bachelor of Education	Te Waananga o Aotearoa
Pareaute JOSEPH	Diploma in Te Reo	Wintec
Helena KARA	Bachelor of Education	Waikato University
Gemma KAVANAGH	Bachelor of Social Sciences	Massey University
Wikuki KINGI	Post Graduate Diploma in Business - Maaori Development	Auckland University
Gregory MABBETT	Certificate in Applied Tech. - Electrical	Wintec
Clinton MATTHEWS	Bachelor of Design	Victoria University
Teiriringa MIDDLETON	Bachelor of Sport & Recreation	Waikato University
Jamie NEWPORT	Bachelor of Management Studies	Waikato University
Ngati Te Ata NEWPORT	Diploma in Information Technology	Wintec
Melanie PEAKMAN	Bachelor of Education	Te Waananga o Aotearoa
Jadine PEDERSEN	Bachelor of Law & Commerce	Victoria University
Ukinga PONGA	Bachelor of Applied Social Sciences	Wintec
Amy POUTAPU	Bachelor of Sport & Leisure Studies	Auckland University
Caleb POUTAPU	Bachelor of Management Studies	Waikato University
Sashi RAM	Bachelor of Accounting	Massey University
Daniel REID	Bachelor of e-Commerce	Waikato University
Claire RORKE	Bachelor of Arts - Honours	Auckland University
Nataliee SEED PIHAMA	Bachelor of Social Sciences	Waikato University
Beryl TAMATI	Bachelor of Sport & Leisure Studies	Waikato University



Dai TE WIATA	Bachelor of Nursing	Whitireia Polytechnic
Kim Marie TE WIATA	Bachelor of Design & Art	Te Waananga o Raukawa
Whakapono WARA	Bachelor of Maaori Art	Te Waananga o Aotearoa
Amy WHARAKURA	Bachelor of Management Studies	Waikato University

#### UMUPUIA

Jason ADAMS	Bachelor of Education	Auckland University
Anaru KINGI	National Certificate in Carpentry	Manukau Polytechnic
Nadia MOON	Bachelor of Education	Massey University
Rachel TRELOAR	Bachelor of Law	Waikato University

#### WAAHI

Moananui RAMEKA	PhD Management Studies	Waikato University
Koryn DUNSTAN	Masters of Arts Management Studies	Waikato University
Karel KAIO	Masters of Arts	Melbourne University
Cherie BROOKS	Bachelor of Education	Waikato University
Josephine DUNSTAN	Diploma in Toi Paemataua	Te Waananga o Aotearoa
Anne Marie HAENGA	Bachelor of Literary Performing Arts	Te Waananga o Raukawa
Mark HARTFIELD	Bachelor of Law & Arts	Auckland University
Rangitaua HUNIA	Bachelor of Business	Wintec
Rawinia HUNIA	Bachelor of Accounting	Massey University
Manawarangi JOHNSON HOWELL	Bachelor of Law	Auckland University
Josephine MAIPI	Diploma in Social Work	Te Waananga o Aotearoa
Te Uaarangi MAIPI	Bachelor of Social Sciences	Waikato University
Charrisa MAKOWHAREMAHIHI	Bachelor of Health Studies	Otago University
Noki NIKAU	Bachelor of Nursing	Wintec
Rima ORMSBY	Bachelor of Arts	Massey University
Anna PROVERBS	Bachelor of Medicine & Chemistry	Otago University
Pawa RAIHE	Diploma in Toi Paemataua	Te Waananga o Aotearoa
Caroline RAPANA	Diploma in Mental Health	Universal College of Learning - Wanganui
Danny RAUMATI	Diploma in Maaori & Management	Te Waananga o Raukawa
Kajaun RHIND REEDY	Bachelor of Science	Waikato University
Koroki WAIKAI	Diploma in Social Services	Te Waananga o Aotearoa

#### WAIKARE

Kathleen GORDON	National Certificate in Computing/ Quality Education	Private Institution
-----------------	---	---------------------

#### WAIKARETUU

Jelena KERRIDGE	Bachelor of Health Sciences	AUT
-----------------	-----------------------------	-----

#### WAINGARO

Marie DONALDSON	Bachelor of Nursing	Wintec
Tuku iho HUIRAMA	Bachelor of Sport & Leisure	Waikato University
Terei HUIRAMA	Bachelor of Applied Social Sciences	Wintec
Aretha KINGI	Diploma in Beauty Therapy	Elite International
Te Kaihauata MASON	Diploma in Maaori Studies	Te Waananga o Raukawa
Vanessa POIHIPI	Bachelor of Social Sciences	Otago University



## EDUCATION GRANTS (continued)

Huirangi TAHANA	Masters of Education	Waikato University
Kyle UERATA	Bachelor of Science	Waikato University

### WAIPAPA

Bella ANDERSON	Bachelor of Education	Te Waananga o Aotearoa
Stella CORAM	Post Doctoral Fellowship	Monash University
Simon DAY	Bachelor of Law & Arts	Otago University
Roimata MEHA	Bachelor of Arts	Waikato University
Damien PAEWAI	Bachelor of Sport & Leisure	Waikato University
Tegan PORIMA	Diploma in Fashion	Massey University
Victoria SIMON	Post Doctoral Studies	Massey University
Katarina SIMON	Post Doctoral Studies	Waikato University
Sheree TANE	Diploma in Teaching Early Childhood Ed	Te Tari Puna Ora Aotearoa
James TE WHATA	Bachelor of Engineering	Western Sydney University
Leah TOOMAN	Bachelor of Science	Victoria University
Davena TUHUA	Bachelor of Education	Waikato University

### WAITI

Dianne BUSKERMOLEN	Diploma in Maaori - Rorohiko	Te Waananga o Raukawa
Michelle HUTCHINS	Bachelor of Social Sciences	Waikato University
Tirissa RANDELL	Bachelor of Teaching	Te Waananga o Aotearoa
Hazel TURNER	Diploma in Toi Paemataua	Te Waananga o Aotearoa
Caroline WITIKA	Graduate Diploma in Arts	Victoria University

### WHAATAAPAKA

Charlotte GRAHAM	Masters of Arts - Maaori Visual	Massey University
Trude KARAKA	Bachelor of Education	Auckland University
Tiraha KARENA	Graduate Diploma in Maaori Development	AUT
Vinny KINGI	Diploma in Maaori Leadership & Innovation	Unitec
Te Awamarahi KINGI	Te Timatanga Hou	Waikato University
Anne Marie KIRKWOOD	Diploma in Fashion	Auckland Polytechnic
Tori NGATAKI	Diploma in Maaori Film & Television Production	South Seas Film & Television School Auckland
Andre WHAANGA	Bachelor of Physical Education	Auckland University



# MARAE GRANTS SCHEDULE 2005

Marae Name	Marae Population	Grant	Marae Name	Marae Population	Grant
Tuurangawaewae	3,061	\$36,251	Kaitumutumu	552	\$9,797
Hukanui	2,032	\$25,402	Mootakotako	539	\$9,660
Waahi	1,901	\$24,020	Ooraeroa	516	\$9,417
Maungatautari	1,736	\$22,281	Ngaatira	514	\$9,396
Te Papaorotu	1,736	\$22,281	Waitii	506	\$9,312
Waipapa	1,496	\$19,750	Te Kauri	467	\$8,901
Maurea	1,427	\$19,023	Owairaka	457	\$8,795
Horahora	1,332	\$18,021	Taupiri	421	\$8,416
Poohara	1,189	\$16,513	Te Ohaaki	415	\$8,352
Waingaro	1,137	\$15,965	Makaurau	411	\$8,310
Raungaiti	1,135	\$15,944	Weraroa	381	\$7,994
Te Taumata	1,127	\$15,860	Te Hoe o Tainui	378	\$7,962
Kahotea	1,124	\$15,828	Hiiona	335	\$7,509
Rukumoana	976	\$14,267	Omaero	329	\$7,446
Te Awamaarahi	972	\$14,225	Te Kooraha	298	\$7,119
Raakaunui	941	\$13,898	Puukaki	290	\$7,034
Tauranganui	941	\$13,898	Umupuia	272	\$6,845
Puurekireki	934	\$13,825	Waikeri	269	\$6,813
Ngaataierua	883	\$13,287	Aotearoa	247	\$6,581
Taniwha	869	\$13,139	Te Aakau	241	\$6,518
Mangatoatoa	812	\$12,538	Waimakariri	220	\$6,296
Mangatangi	784	\$12,243	Rereteewhioi	215	\$6,244
Te Kotahitanga	782	\$12,222	Tahunakaitoto	213	\$6,223
Tauwhare	740	\$11,779	Mookai Kainga	193	\$6,012
Te Kaharoa	724	\$11,610	Tikirahi	179	\$5,864
Whaataapaka	668	\$11,020	Te Tihi o Moerangi	168	\$5,748
Te Tokanganuiانوho	651	\$10,841	Aaruka	163	\$5,695
Maketuu	646	\$10,788	Pukerewa	158	\$5,643
Poihaakena	643	\$10,756	Oopuatia	154	\$5,601
Ookapu	629	\$10,609	Tauhei	144	\$5,495
Kai-a-te-mata	613	\$10,440	Te Papatapu	138	\$5,432
Ngaa Hau e Whaa	605	\$10,356	Okarea	71	\$4,725
Te Puea	583	\$10,124			
Waikare	553	\$9,807			
				<b>46,236</b>	<b>\$750,000</b>

## NOTE

The annual allocation to Tahunakaitoto remains to be uplifted. Tikirahi allocation has been withheld.



WAIKATO RAUPATU LANDS TRUST

**CONSOLIDATED  
FINANCIAL STATEMENTS**

FOR THE YEAR ENDED 31 MARCH 2005



## SCHEDULE OF CONTENTS

Consolidated Statement of Financial Performance .....	36
Consolidated Statement of Movements in Equity.....	37
Consolidated Statement of Financial Position .....	38
Consolidated Statement of Cash Flows .....	39
Notes to the Financial Statements .....	40
Auditor's Report .....	59
Directory .....	60



# CONSOLIDATED STATEMENT OF FINANCIAL PERFORMANCE

FOR THE YEAR ENDED 31 MARCH 2005

	Note	Consolidated		Parent	
		2005 \$'000	2004 \$'000	2005 \$'000	2004 \$'000
<b>REVENUE</b>					
Total revenue	5	27,341	41,229	983	300
<b>EXPENSES</b>					
Total expenses	5	10,283	29,720	4,669	3,770
<b>OPERATING SURPLUS/(DEFICIT)</b>					
		17,058	11,509	(3,686)	(3,470)
Surplus on revaluation of livestock		92	95	-	95
Net deficit attributable to minority interests		-	(27)	-	-
		92	68	-	95
<b>OPERATING SURPLUS/(DEFICIT) FOR THE YEAR</b>					
Share of associates net surplus	11	950	958	-	-
Less grants	19	(1,944)	(1,206)	(1,944)	(1,206)
<b>NET SURPLUS/(DEFICIT) FOR THE YEAR</b>					
		<b>16,156</b>	<b>11,329</b>	<b>(5,630)</b>	<b>(4,581)</b>



## CONSOLIDATED STATEMENT OF MOVEMENTS IN EQUITY

FOR THE YEAR ENDED 31 MARCH 2005

	Note	Consolidated		Parent	
		2005 \$'000	2004 \$'000	2005 \$'000	2004 \$'000
Movement in revaluation	6	61,669	10,254	12,596	4,199
Net surplus not recognised in statement of financial performance		61,669	10,254	12,596	4,199
Net surplus / (deficit) recognised in statement of financial performance	6	16,156	11,329	(5,630)	(4,581)
Comprehensive surplus / (deficit)		77,825	21,583	6,966	(382)
Equity at beginning of year		209,420	187,810	175,043	175,425
Realised revaluation on transfer of assets		-	-	5,387	-
Movements in minority interests		(1,220)	27	-	-
<b>EQUITY AT END OF YEAR</b>		<b>286,025</b>	<b>209,420</b>	<b>187,396</b>	<b>175,043</b>
Represented by:					
Endowment reserve	6	1,477	1,477	1,477	1,477
Minority interests in subsidiaries		-	1,220	-	-
Retained earnings	6	186,719	170,563	163,673	163,916
Revaluation reserve	6	97,829	36,160	22,246	9,650
<b>TOTAL EQUITY</b>		<b>286,025</b>	<b>209,420</b>	<b>187,396</b>	<b>175,043</b>



# CONSOLIDATED STATEMENT OF FINANCIAL POSITION

FOR THE YEAR ENDED 31 MARCH 2005

	Note	Consolidated		Parent	
		2005 \$'000	2004 \$'000	2005 \$'000	2004 \$'000
<b>EQUITY</b>		<b>286,025</b>	<b>209,420</b>	<b>187,396</b>	<b>175,043</b>
<b>CURRENT ASSETS</b>					
Cash		32,897	40,324	3,002	2,129
Accounts receivable	8	3,402	5,447	2,581	1,818
Prepayments		491	1,648	51	65
GST		(131)	(338)	17	15
Inventory	9	3,591	4,942	-	766
Unsecured loans	10	411	175	411	175
		40,661	52,198	6,062	4,968
<b>NON-CURRENT ASSETS</b>					
Unsecured loans	10	-	343	-	236
Investments and advances	11	31,140	10,894	129,823	137,333
Fish quota	12	5,968	6,033	-	-
Property, plant and equipment	13	33,193	29,670	13,105	23,496
Te Wherowhero title	14	34,713	15,843	34,713	3,948
Investment & development properties	15	146,829	104,109	5,692	6,795
		251,843	166,892	183,333	171,808
<b>TOTAL ASSETS</b>		<b>292,504</b>	<b>219,090</b>	<b>189,395</b>	<b>176,776</b>
<b>CURRENT LIABILITIES</b>					
Accounts payable	16	4,876	6,996	396	376
Provision for grants	17	1,559	1,310	1,559	1,310
Provision for dividend		-	277	-	-
Current portion of loans	18	3	1,043	3	-
		6,438	9,626	1,958	1,686
<b>NON-CURRENT LIABILITIES</b>					
Loans and advances	18	41	44	41	47
<b>TOTAL LIABILITIES</b>		<b>6,479</b>	<b>9,670</b>	<b>1,999</b>	<b>1,733</b>
<b>TOTAL NET ASSETS</b>		<b>286,025</b>	<b>209,420</b>	<b>187,396</b>	<b>175,043</b>



28 October 2005

DIRECTOR OF WAIKATO RAUPATU TRUSTEE COMPANY LIMITED  
TRUSTEE OF WAIKATO RAUPATU LANDS TRUST



28 October 2005

DIRECTOR OF WAIKATO RAUPATU TRUSTEE COMPANY LIMITED  
TRUSTEE OF WAIKATO RAUPATU LANDS TRUST



# CONSOLIDATED STATEMENT OF CASH FLOWS

FOR THE YEAR ENDED 31 MARCH 2005

	Note	Consolidated		Parent	
		2005 \$'000	2004 \$'000	2005 \$'000	2004 \$'000
<b>CASH FLOWS FROM OPERATING ACTIVITIES</b>					
Cash was provided from:					
Receipts from customers		21,444	28,125	721	937
Dividends received		117	7	4	7
Interest received		2,956	2,220	170	139
		24,517	30,352	895	1,083
Cash was applied to:					
Payments to suppliers		12,233	10,620	1,404	1,888
Payments to employees		2,747	2,898	1,247	954
Grants made		1,695	826	1,695	758
GST (net)		207	51	2	27
		16,882	14,395	4,348	3,627
<b>NET CASH INFLOW / (OUTFLOW) FROM OPERATING ACTIVITIES</b>	29	<b>7,635</b>	<b>15,957</b>	<b>(3,453)</b>	<b>(2,544)</b>
<b>Cash flows from investing activities</b>					
Cash was provided from:					
Advances repaid		107	399	4,724	4,741
Investments sold		11,365	7,017	-	-
Sale of fixed assets		-	469	-	17
		11,472	7,885	4,724	4,758
Cash was applied to:					
Investments purchased		24,859	154	-	-
Purchase of fixed assets		632	-	395	191
		25,491	154	395	191
<b>NET CASH INFLOW / (OUTFLOW) FROM INVESTING ACTIVITIES</b>		<b>(14,019)</b>	<b>7,731</b>	<b>4,329</b>	<b>4,567</b>
<b>CASH FLOWS FROM FINANCING ACTIVITIES</b>					
Cash was applied to:					
Loan repayments		1,043	3,653	3	4
<b>NET CASH INFLOW / (OUTFLOW) FROM FINANCING ACTIVITIES</b>		<b>(1,043)</b>	<b>(3,653)</b>	<b>(3)</b>	<b>(4)</b>
Net increase / (decrease) In cash held		(7,427)	20,035	873	2,019
Add cash at start of year		40,324	20,289	2,129	110
<b>CASH BALANCE AT END OF YEAR</b>		<b>32,897</b>	<b>40,324</b>	<b>3,002</b>	<b>2,129</b>

These financial statements should be read in conjunction with the notes on pages 40 to 58



# NOTES TO THE CONSOLIDATED FINANCIAL STATEMENTS

FOR THE YEAR ENDED 31 MARCH 2005

## 1 STATEMENT OF ACCOUNTING POLICIES

The financial statements presented here are for the Waikato Raupatu Lands Trust and the consolidated financial statements of the Group comprising the Waikato Raupatu Lands Trust and its subsidiaries, and associated entities. The financial statements have been prepared in accordance with the requirements of the Financial Reporting Act 1993.

### Measurement Base

The accounting principles recognised as appropriate for the measurement and reporting of financial performance and financial position on a historical cost basis are followed by the Waikato Raupatu Lands Trust, modified to include the revaluation of land and buildings, investment properties and fish quota.

### Specific Accounting Policies

The following specific accounting policies which materially affect the measurement of financial performance and financial position have been applied:

#### (a) Consolidated Financial Statements

The consolidated financial statements comprise Waikato Raupatu Lands Trust (the "Trust"), its subsidiaries (the "Group") and the Group's interest in associates and partnerships.

#### Subsidiaries

Subsidiaries are those entities in which the Trust or Group holds a controlling interest in the entity. Subsidiaries are consolidated under the purchase method on a line-by-line basis. All intercompany transactions, balances and unrealised surpluses and deficits on transactions between Group members have been eliminated. Where necessary, accounting policies for subsidiaries have been changed to ensure consistency with the policies adopted by the Trust.

The interest of minority shareholders is stated at the minority's proportion of the fair values of the identifiable assets and liabilities recognised on acquisition together with the minority interest's share of post acquisition surpluses.

#### Associates

An associate is an investee, not being a subsidiary or joint venture arrangement, over which the Group has the capacity to exercise significant influence through participation in the financial and operating policy decisions of the investee.

The Group financial statements incorporate the Group's interest in associates, using the equity method, as from the date that significant influence commenced or until the date the significant influence ceased. The investments are recorded at the lower of carrying value and recoverable amount.

The Group recognises its share of the associates' net surplus or deficit for the year as operating revenue in its statement of financial performance. The Group's share of the associates' surplus or deficit is adjusted for the differences between the accounting policies of the Group and associates. The Group recognises its share of other post-acquisition movements in reserves in its statement of movements in equity. Dividends received from associates are recognised directly against the carrying value of the investment. In the statement of financial position the investment and the reserves are increased by the Group's share of post-acquisition retained surplus and post-acquisition reserves of the associates. In assessing the Group's share of earnings of associates, the Group's share of any profits between the Group companies and associates is eliminated.

#### Joint Ventures

Joint ventures are consolidated under the proportionate method on a line-by-line basis. All transactions, balances and unrealised surpluses and deficits on transactions between joint venture members have



been eliminated. Where necessary, accounting policies for the joint venture have been changed to ensure consistency with the policies adopted by the Trust.

(b) **Depreciation**

Depreciation has been charged in the financial statements using rates approved by the Inland Revenue Department based on estimated useful life. These rates are considered appropriate. The depreciation rates used are as follows:

Buildings .....	2.0% to 11.4% diminishing value
Motor vehicles .....	12.0% to 31.2% diminishing value
Office equipment .....	14.4% to 48.0% diminishing value
Furniture & fittings.....	9.5% to 50.0% diminishing value

(c) **Property, Plant and Equipment**

**Land and Buildings**

Land and buildings are revalued every three years to fair value by an independent valuer, except for Puka Park Resort Limited which is recorded at a written down value. Land and buildings acquired since the last revaluation are recorded at historical cost.

**Trees**

Trees are revalued annually and the revaluation is recognised in the statement of financial performance.

**Property, Plant and Equipment, Vehicles, Office Equipment, Furniture and Fittings**

Property, plant and equipment, vehicles, office equipment, furniture and fittings are recorded at original cost less accumulated depreciation. Property, plant and equipment, vehicles, office equipment, furniture and fittings costing less than \$500 are expensed to the statement of financial performance.

**Property under Finance Lease**

Assets held under finance lease are depreciated on a straight line basis over the term of the lease, or where ownership is transferred at the conclusion of the lease at no cost or at a bargain price, over the expected useful life of the asset.

(d) **Te Wherowhero Property**

Properties owned with the intention of being registered under Te Wherowhero titles are recorded at net current values.

Te Wherowhero properties that are leased have been recorded at net current value. Te Wherowhero properties that are not leased are recorded at cost.

(e) **Investment Property**

Properties owned with the intention of being held for investment purposes, which are revalued annually, are recorded at net current values and are not depreciated. All revaluations are taken directly to the revaluation reserve. Decreases in value are debited directly to the revaluation reserve to the extent that they reverse previous surpluses and are otherwise recognised as expenses in the statement of financial performance.

**Development Property**

Properties under development are held at cost plus development expenditure incurred to date. Where the property has been reclassified from investment property in the prior year, the property has been reported at the net current value at the date of change in classification. Profits emerging from these developments are recognised on a percentage of completion basis only when they become measurable



under the appropriate accounting standard. Revenue relating to section sales is recognised when an obligation exists and there is no significant condition or uncertainty attached to the sale contract.

#### Properties Held for Sale

Properties held for sale are held at cost. Where the property has been reclassified from investment property in the prior year, the property has been reported at the net current value at the date of change in classification.

#### (f) Investments (other than subsidiaries and associate companies)

Investments are recorded at the lower of cost or net realisable value except for funds invested with fund managers (see note 11) which are revalued to market value and the profit or loss is reported in the statement of financial performance.

#### (g) Taxation

The Inland Revenue Department approved Waikato Raupatu Lands Trust as charitable for the purposes of the Income Tax Act 1994. Accordingly, no income tax is payable.

However some subsidiary and associate entities are taxable. In the instances where an entity is taxable the liability method using the comprehensive basis of tax-effect accounting is applied. Income tax expense shown on the Statement of Financial Performance is based on the operating deficit before tax adjusted for any permanent differences.

Timing differences which arise due to the different accounting periods in which items of revenue and expense are included in the determination of operating profit before income tax and taxable income, are brought to account as either provision for deferred tax or an asset described as future income tax benefit at the rate of income tax applicable to the period in which the benefit will be received or the liability will become payable.

Future income tax benefits are only carried forward to the extent there is virtual certainty of their recovery.

The amount of benefits brought to account or which may be realised in the future is based on the assumption that no adverse change will occur in income taxation legislation and the anticipation that the trust will derive sufficient future assessable income to enable the benefit to be realised and comply with the conditions of deductibility imposed by the law. See note 3 for details of which entities have charitable status.

#### (h) Accounts Receivable

Accounts Receivable are recorded at estimated realisable values. Property settlements relate to unconditional sale agreements existing at balance date. An estimate is made for doubtful receivables based on a review of all outstanding amounts at year end. Bad debts are written off during the year in which they are identified.

#### (i) Inventories

Inventories are stated at the lower of cost and net realisable values on a weighted average cost basis.

#### (j) Livestock

Livestock is valued at estimated current market value.

#### (k) Fishing Quota

Fishing Quota is valued on a cyclical basis by an independent valuer at market value. Any change in value is reflected in the statement of financial position.



(l) **Goods and Services Tax**

The statement of financial performance and statement of cash flows have been prepared so that all components are stated exclusive of GST. All items in the statement of financial position are stated net of GST, with the exception of receivables and payables which include GST invoiced.

(m) **Foreign Currency Transactions**

Transactions denominated in foreign currencies are translated into the reporting currency using the exchange rate in effect at the transaction date.

Monetary items receivable or payable in a foreign currency, other than those resulting from short term transactions covered by specific forward exchange contracts, are translated at balance date at the closing rate. For transactions covered by short term forward exchange contracts, the rates specified in those contracts are used as the basis for measuring and reporting the transaction.

Exchange differences on foreign currency balances are recognised in the statement of financial performance.

(n) **Financial Instruments**

The Group has various financial instruments with off-balance sheet risk for the primary purpose of reducing its exposure to fluctuations in foreign currency exchange rates. While these financial instruments are subject to risk that market rates may change subsequent to acquisition, such changes would generally be offset by opposite effects on the items being hedged.

Forward exchange contracts entered into as hedges or foreign exchange assets or liabilities are valued at the exchange rates prevailing at year end. Any unrealised gains or losses are offset against foreign exchange gains or losses on the related asset or liability. Unrealised gains or losses on forward exchange contracts entered into as hedges of future sales or purchases are deferred and included in the measurement of the purchase or sale transaction.

Financial instruments purchased with the intention of being held for the long term or until maturity are recorded at cost.

(o) **Leases**

Leases of fixed assets, where substantially all the risks and benefits incidental to the ownership of the asset, but not the legal ownership, are transferred to the Trust, are classified as finance leases. Finance leases are capitalised recording an asset and a liability equal to the present value of the minimum lease payments, including any guaranteed residual value. Lease payments are allocated between the reduction of the lease liability and the lease interest expense for the period.

Lease payments for operating leases, where substantially all the risks and benefits remain with the lessor, are charged as expenses in the periods in which they are incurred.

(p) **Cash Flows**

The statement of cash flows is prepared exclusive of GST, which is consistent with the method used in the statement of financial performance.

**Definitions of the terms used in the statement of cash flows:**

“Cash” includes coins and notes, demand deposits and other highly liquid investments readily convertible into cash and includes at call borrowings such as bank overdrafts, used by the Trust and the Group as part of their day-to-day cash management.

“Operating activities” include all transactions and other events that are not investing or financing activities.



“Investing activities” are those activities relating to the acquisition and disposal of current and non-current investments and any other non-current assets.

“Financing activities” are those activities relating to changes in the equity and debt capital structure of the Trust and Group and those activities relating to the cost of servicing the Trust’s and the Groups’ equity capital.

(q) **Changes in Accounting Policies**

There have been no changes in accounting policies. All policies have been applied on bases consistent with those used last year.

## 2 TE WHEROWHERO TITLE

Te Wherowhero title is the mechanism set up to protect the title of lands in the tribal estate. The benefits and the land in Te Wherowhero title are for all Waikato Tainui and the land cannot be succeeded to, sold, alienated, mortgaged or gifted without adherence to a process to obtain the mandate of the voting beneficiaries or their representatives and unanimous consent of the Custodial Trustee. The title is protected by the Custodial Trustee - Te Arikinui Te Atairangikaahu. Lands under this title are separately disclosed in note 14.

## 3 CONSOLIDATION

Subsidiaries	Charitable Status	Operating Division	Ownership & Voting Interest		Balance Date
			2005	2004	
Maori Development Corporation Ltd	No	Investment	100%	100%	31 March
MDC Investments Ltd	No	Investment	100%	100%	31 March
MDC Finance Ltd	No	Investment	100%	100%	31 March
MDC Funds Management Ltd	No	Investment	100%	100%	31 March
MDC Nominees Ltd	No	Investment	100%	100%	31 March
Puka Park Resort Ltd	No	Investment	100%	100%	31 March
Raukura Moana Fisheries Ltd	Yes	Fisheries	-	82%	30 September
Raukura Moana Seafoods Ltd	Yes	Fisheries	100%	100%	30 September
Raukura Whare Ltd	Yes	Investment	100%	100%	31 March
Tainui Corporation Ltd	Yes	Property	100%	100%	31 March
Tainui Development Ltd	Yes	Property	100%	100%	31 March
Tainui Group Holdings Ltd	Yes	Investment	100%	100%	31 March
Te Rapa 2002 Ltd	Yes	Property	100%	100%	31 March
Waikato Raupatu Trustee Company Ltd	Yes	Investment	100%	100%	31 March

### Investments in Subsidiaries

The Group has sold 33% of its share in Raukura Moana Fisheries Limited on 31 August 2004, and the results of its operations are included in the consolidated statement of financial performance up to that date. The results of Raukura Moana Fisheries Limited contributed \$75,627 to the consolidated net surplus (before gain on disposal of subsidiary) for the five month period to 31 August 2004.



The disposal of shares in subsidiaries affected the statement of financial position as follows:

	Note	Consolidated Decreases from Disposal \$'000	Parent Decreases from Disposal \$'000
<b>Assets</b>			
Property, plant and equipment		(22)	-
Fish quota		(61)	-
Inventories		(1,163)	-
Accounts receivable		(1,035)	-
Bank		(6,619)	-
<b>Liabilities</b>			
Accounts payable		7,192	-
		(1,708)	-
Minority interest		1,220	-
Net assets disposed		(488)	-
Cash proceeds from disposal		544	-
Surplus on disposal	5	56	-
Cash proceeds from disposal		544	-
Cash sold with subsidiary		(6,619)	-
Net outflow to the Group		(6,075)	-

	Operating Division	Interest Held		Balance Date
		2005	2004	
<b>Associates</b>				
Puhinui Airport Park Ltd	Investment	-	50%	31 March
Raukura Moana Fisheries Ltd	Fisheries	49%	-	30 September
Hamilton Riverview Hotel Ltd	Investment	41%	41%	31 December

The financial statements for Puhinui Airport Park Ltd have not been audited. Puhinui Airport Park Ltd was liquidated on 28 February 2005.

Raukura Moana Fisheries Limited has been reclassified from a subsidiary to an associate due to the sale of 33% in shares on 31 August 2004, reducing the investment in 2005 to 49% (2004 - 82%).

	Operating Division	Interest Held		Balance Date
		2005	2004	
<b>Unincorporated Joint Ventures</b>				
Callum Brae Tainui	Property	50%	50%	31 March
The Base Te Rapa	Property	50%	-	31 July

The results of Callum Brae Tainui included in the statement of financial performance are for a 12 month period.



The results of The Base Te Rapa included in the statement of financial performance are for a 4 month period from December 2004. The consolidated financial results by operating divisions are as follows:

	Operating Income \$'000	Net Operating Surplus / (Deficit) \$'000	Total Assets Employed \$'000
<b>For the year ended 31 March 2005</b>			
Lands Trust	983	(5,630)	57,136
Property	16,221	16,581	148,783
Fisheries	1,033	1,983	7,164
Investment	9,104	3,222	79,421
	27,341	16,156	292,504
<b>For the year ended 31 March 2004</b>			
Lands Trust	300	(4,581)	40,820
Property	20,763	13,085	116,311
Fisheries	13,308	686	16,254
Investment	6,858	2,139	45,705
	41,229	11,329	219,090

#### 4 WAIKATO RAUPATU SETTLEMENT

On 22 May 1995, Waikato-Tainui signed the Deed of Settlement with the Crown's representatives for a full and final settlement of its Raupatu claim to be made to the Waikato Raupatu Lands Trust. This agreement formed the basis for the Waikato Raupatu Claims Settlement Act 1995.

The settlement, being the redress value, is specified as \$170 million. The settlement was realised as follows:

- (a) Te Rapa Airforce Base transferred to Waikato-Tainui in 1993 as an advance on the Settlement (at agreed 1993 market value);
- (b) Crown reimbursement of negotiation and research costs incurred by Tainui Maori Trust Board being amounts paid from 21 September 1992 totaling \$2,646,580;
- (c) Lands situated in the Waikato-Tainui claim area which are owned by the Crown and are selected by Waikato-Tainui (the process is outlined in the Deed of Settlement) at values agreed between the parties using the valuation methodology stated in the Deed of Settlement;
- (d) Any balance remaining was paid in cash to the Waikato Land Acquisition Trust which transferred the cash to the Waikato Raupatu Lands Trust as and when required to fund the purchase of other lands.

The Lands referred to in (c) above were identified, transfer dates agreed upon and transfer values determined by both parties by 30 November 1996. These Lands were to be returned over a 5 year period from 22 May 1995. In addition, interest was paid by the Crown on the outstanding balance of the redress value, such interest being calculated at 8.8716% pa, on the daily balance and payable 6 monthly in arrears.



## 5 OPERATING INCOME AND EXPENSES

Operating income and expenses include:

	Note	Consolidated		Parent	
		2005 \$'000	2004 \$'000	2005 \$'000	2004 \$'000
<b>Income</b>					
Dividends		121	8	4	7
Interest		2,956	2,191	170	111
Profit on sale of land		3,629	7,239	-	-
<b>Expenses</b>					
Audit	20	71	106	12	15
Bad debts		39	11	-	-
Depreciation					
- Buildings		836	687	662	567
- Office equipment, furniture & fittings		301	325	150	167
- Plant & equipment		103	93	44	38
- Vehicles		78	68	58	52
Directors fees	30	512	552	279	335
Doubtful debts		17	110	-	83
Foreign exchange gains		-	(94)	-	-
Interest		37	13	3	-
Leases		135	284	33	28
(Gain)/loss on sale of fixed assets		(1)	283	-	-
Gain on disposal in subsidiary	3	(56)	-	-	-

## 6 EQUITY

		Consolidated		Parent	
		2005 \$'000	2004 \$'000	2005 \$'000	2004 \$'000
<b>Retained Earnings</b>					
Balance at beginning of year		170,563	159,234	163,916	168,497
Net surplus (deficit) for the year		16,156	11,329	(5,630)	(4,581)
Realised revaluation on transfer of assets		-	-	5,387	-
Balance at end of year		186,719	170,563	163,673	163,916
<b>Revaluation Reserve</b>					
Balance at beginning of year		36,160	25,906	9,650	5,451
Revaluation surplus during the year		61,669	10,254	17,983	4,199
Realised revaluation on transfer of assets		-	-	(5,387)	-
Balance at end of year		97,829	36,160	22,246	9,650



### Endowment Reserve

The endowment reserve arose from a resolution of Te Kauhanganui at a meeting of 13 August 1999. The endowment is to be used to fund scholarships in the Endowed College in the name of Sir Robert Te Kotahi Mahuta Endowment Scholarships.

The Waikato Raupatu Lands Trust is responsible for the endowment scholarships. This has resulted in a separate equity reserve being recorded to recognise this obligation.

## 7 DISCONTINUED ACTIVITIES

Raukura Moana Seafoods Limited ceased harvesting and selling fish on 31 July 2003. The company continues to manage its quota assets.

	Continuing 2005 \$'000	Discontinuing 2005 \$'000	Total 2005 \$'000
--	------------------------------	---------------------------------	-------------------------

### Statement of Financial Performance

Operating revenue	27,341	-	27,341
Net surplus	16,156	-	16,156

### Statement of Financial Position

Total assets	292,504	-	292,504
Total liabilities	6,479	-	6,479

	Continuing 2004 \$'000	Discontinuing 2004 \$'000	Total 2004 \$'000
--	------------------------------	---------------------------------	-------------------------

### Statement of Financial Performance

Operating revenue	40,631	598	41,229
Net surplus (deficit)	12,008	(679)	11,329

### Statement of Financial Position

Total assets	219,055	35	219,090
Total liabilities	9,669	1	9,670

## 8 ACCOUNTS RECEIVABLE

	Consolidated		Parent	
	2005 \$'000	2004 \$'000	2005 \$'000	2004 \$'000
Property settlements	354	338	-	-
Intercompany accrual	-	-	2,435	1,761
Sundry debtors	3,048	5,109	146	57
	3,402	5,447	2,581	1,818



## 9 INVENTORY AND LIVESTOCK

	Consolidated		Parent	
	2005 \$'000	2004 \$'000	2005 \$'000	2004 \$'000
Finished goods	33	1,596	-	-
Land - sections held for sale	2,721	2,579	-	-
<b>Total Inventory</b>	<b>2,754</b>	<b>4,175</b>	<b>-</b>	<b>-</b>
<b>Livestock</b>				
Cattle	325	332	-	332
Sheep	512	435	-	434
<b>Total Livestock</b>	<b>837</b>	<b>767</b>	<b>-</b>	<b>766</b>
<b>TOTAL INVENTORY AND LIVESTOCK</b>	<b>3,591</b>	<b>4,942</b>	<b>-</b>	<b>766</b>

## 10 UNSECURED LOANS

	Consolidated		Parent	
	2005 \$'000	2004 \$'000	2005 \$'000	2004 \$'000
Hamilton City Council	-	107	-	-
Marae	411	411	411	411
	411	518	411	411
Current Portion	(411)	(175)	(411)	(175)
	-	343	-	236

The loans to Marae are repayable on demand and no interest is payable.



## 11 INVESTMENTS

	Consolidated		Parent	
	2005 \$'000	2004 \$'000	2005 \$'000	2004 \$'000
Shares in unlisted companies	1,846	6,620	-	1,378
ING (NZ) Ltd - New Zealand fixed interest & cash	20,877	-	-	-
Tower Asset Management Ltd - NZ equities & cash	2,869	-	-	-
Investments in associates	5,548	4,274	-	-
Advances in subsidiaries	-	-	129,823	135,955
	31,140	10,894	129,823	137,333
<b>Advances in subsidiaries</b>				
MDC Investments Ltd	-	-	(2,026)	(3,007)
Tainui Group Holdings Ltd	-	-	131,849	138,962
	-	-	129,823	135,955
<b>Carrying value of associates</b>				
Carrying value at beginning of year	4,274	3,960	-	-
Transfer to shares in unlisted companies	-	(244)	-	-
Transfer from subsidiaries	940	-	-	-
Cash distribution	(616)	(400)	-	-
	4,598	3,316	-	-
Share of surplus before taxation	959	1,153	-	-
Share of tax expense	(9)	(195)	-	-
Share of net surplus	950	958	-	-
Carrying value at end of year	5,548	4,274	-	-
<b>The carrying value is comprised of:</b>				
Cost	6,940	6,105	-	-
Share of associate post acquisition reserves	(1,392)	(1,831)	-	-
	5,548	4,274	-	-

## 12 FISH QUOTA

The revalued fish quota on hand at balance date has been stated at current market value as determined by an independent valuer, D Boyle of the firm Quota Managements Systems Limited as at 31 March 2005.



### 13 PROPERTY, PLANT AND EQUIPMENT

	Consolidated		Parent	
	2005 \$'000	2004 \$'000	2005 \$'000	2004 \$'000
<b>Land</b>				
At cost	11,624	10,453	28	5,960
Trees at cost	111	111	-	-
Revaluation	4,292	1,219	-	2,986
	16,027	11,783	28	8,946
<b>Buildings</b>				
At cost	9,986	10,454	5,699	7,037
Accumulated depreciation	(2,850)	(2,852)	(2,062)	(2,232)
Revaluation	-	67	-	67
	7,136	7,669	3,637	4,872
<b>Endowed college</b>				
At cost	11,866	11,865	11,866	11,865
Accumulated depreciation	(3,328)	(2,910)	(3,328)	(2,910)
	8,538	8,955	8,538	8,955
<b>Plant and equipment</b>				
At cost	1,219	914	786	633
Accumulated depreciation	(502)	(534)	(278)	(370)
	717	380	508	263
<b>Vehicles</b>				
At cost	674	646	550	573
Accumulated depreciation	(416)	(401)	(384)	(385)
	258	245	166	188
<b>Office equipment, furniture &amp; fittings</b>				
At cost	2,937	3,087	1,703	1,675
Accumulated depreciation	(2,420)	(2,449)	(1,475)	(1,403)
	517	638	228	272
<b>Total Property, Plant &amp; Equipment</b>	<b>33,193</b>	<b>29,670</b>	<b>13,105</b>	<b>23,496</b>

The trees were valued by registered valuer R H Webster NZIF as at 31 March 2005. The basis of valuation is market value.

Land and buildings which have been revalued were valued by registered valuers Telfer Young (Waikato) Limited and Colliers International New Zealand Limited as at 31 March 2005. The basis of valuation is market value.



## 14 TE WHEROWHERO TITLE

	Note	Consolidated		Parent	
		2005 \$'000	2004 \$'000	2005 \$'000	2004 \$'000
Lands under Te Wherowhero title		15,795	12,259	15,795	3,901
Revaluation		18,918	3,584	18,918	47
<b>Total Te Wherowhero title property</b>	<b>2</b>	<b>34,713</b>	<b>15,843</b>	<b>34,713</b>	<b>3,948</b>

In May 2004, the Waikato Raupatu Lands Trustee Company Limited and Tainui Group Holdings Limited agreed that the assets held in Te Wherowhero title be transferred from Tainui Group Holdings Limited to the Waikato Raupatu Trustee Company Limited.

Te Wherowhero lands were valued by registered valuers Telfer Young (Waikato) Limited and Curnow Tizard Limited as at 31 March 2005. The basis of valuation is market value.

## 15 INVESTMENT AND DEVELOPMENT PROPERTIES

	Consolidated		Parent	
	2005 \$'000	2004 \$'000	2005 \$'000	2004 \$'000
<b>Investment properties</b>				
At cost	53,588	32,979	2,905	3,183
Revaluation	61,408	19,110	2,787	3,612
	114,996	52,089	5,692	6,795
<b>Development properties</b>				
At cost	30,881	36,050	-	-
Revaluation	-	4,607	-	-
	30,881	40,657	-	-
<b>Excess properties held for sale</b>				
At cost	952	10,230	-	-
Revaluation	-	1,133	-	-
	952	11,363	-	-
<b>Total Investment and Development Properties</b>	<b>146,829</b>	<b>104,109</b>	<b>5,692</b>	<b>6,795</b>

Investment properties were valued by registered valuers Ford Snelgrove Sargent Limited, Telfer Young (Waikato) Limited, Curnow Tizard Limited and Property Valuations Limited as at 31 March 2005. The basis of valuation is market value less the estimated costs of disposal.



Estimated proportion of properties leased to third parties:

**Consolidated & Parent**

	2005	2004
	%	%
Fixed assets (land and buildings)	5%	6%
Investment properties	96%	98%
Development properties	98%	91%
Excess properties held for sale	100%	86%

**16 ACCOUNTS PAYABLE**

**Consolidated**

**Parent**

	2005	2004	2005	2004
	\$'000	\$'000	\$'000	\$'000
Trade creditors & accruals	4,541	6,592	303	261
Employee entitlements	335	404	93	115
	4,876	6,996	396	376

**17 PROVISION FOR GRANTS**

**Consolidated & Parent**

Note

2005

2004

\$'000

\$'000

The Trust resolved to pay grants from the current years income.

The following amounts were paid after balance date:

Marae	19	750	750
Education	19	650	428
Provision to be made from current year		1,400	1,178
Less transferred to Marae loans		-	(68)
		1,400	1,110
Marae & Education grants from prior year yet to be paid		159	200
		1,559	1,310

**18 NON-CURRENT LIABILITIES**

**Consolidated**

**Parent**

	2005	2004	2005	2004
	\$'000	\$'000	\$'000	\$'000
Housing Corporation of New Zealand	44	47	44	47
Redeemable preference shares	-	1,040	-	-
	44	1,087	44	47
Less current portion	(3)	(1,043)	(3)	-
	41	44	41	47



## 19 GRANTS

	Note	Consolidated		Parent	
		2005 \$'000	2004 \$'000	2005 \$'000	2004 \$'000
Grants paid during the year comprise the following:					
Marae	17	750	744	750	744
Education	17	650	428	650	428
Other		544	34	544	34
		1,944	1,206	1,944	1,206

## 20 AUDITORS REMUNERATION

	Note	Consolidated		Parent	
		2005 \$'000	2004 \$'000	2005 \$'000	2004 \$'000
For audit services: Deloitte		66	83	12	8
For other services: Deloitte		5	23	-	7
	5	71	106	12	15

## 21 FISHERY ASSETS

Te Ohu Kaimoana is presently holding fisheries assets on behalf of all iwi. No recognition has been made in the financial statements of these assets.

## 22 INCOME TAX

The taxable members of the Group have sufficient losses to carry forward to meet any potential income tax liability. The taxable losses are not recorded in the financial statements due to the lack of virtual certainty that the losses will be realised. The approximate unrecognised tax losses carried forward are \$3.2m (2004 \$3.0m).

## 23 COMMITMENTS

The following amounts have been committed to by the Group and the Trust but are not recognised in the financial statements.

	Consolidated		Parent	
	2005 \$'000	2004 \$'000	2005 \$'000	2004 \$'000
<b>(a) Non Cancelable Operating Leases Due:</b>				
Within one year	110	143	27	27
Between one and two years	95	110	27	27
Between two and five years	179	210	27	44
After five years	194	239	-	-

### (b) Capital Commitments

Tainui Group Holdings Ltd has entered into a Joint Venture Agreement with The Warehouse Group Ltd to develop property at Te Rapa, Hamilton. Tainui Group Holdings Ltd is committed to providing \$9,250,000 towards the capital cost of the development. As at 31 March 2005 a balance of \$2,963,200 remains unpaid (2004 - \$9,250,000).



## 24 CONTINGENT LIABILITIES & GAINS

- (a) Raukura Whare Limited has agreed to underwrite Housing Corporation of New Zealand mortgages. Raukura Whare Limited is liable for any mortgages which default if total claims exceed \$23.3m. The life of the loans is 20 years. The Trustees believe that the expectation of defaulting mortgages exceeding \$23.3m is low.
- (b) The BNZ currently holds a registered first mortgage over property situated at Wairere Drive / Huntington Drive, Hamilton. This property is part of the joint venture Callum Brae Tainui. Tainui Group Holdings Ltd has also guaranteed to the BNZ an amount of \$1.25m plus interest and costs as part of the joint venture with Callum Brae Tainui.
- (c) As part of the Tainui Group Holdings Ltd commitment to The Base Joint Venture, Westpac Bank currently holds a security interest and first ranking charge over funds that Tainui Group Holdings Ltd has deposited at Westpac Bank.

## 25 FINANCIAL INSTRUMENTS

### (a) Currency

The Group has exposure to foreign exchange risk as a result of transactions and balances denominated in foreign currencies, arising from normal trading activities.

Where exposures are certain, such as offshore debtors and creditors, it is the Group's policy to hedge these risks as they arise.

The Group uses forward foreign exchange contracts to manage these exposures. The notional principal or contract amounts of foreign exchange instruments outstanding at balance date are as follows:

There are no forward foreign exchange contracts as at 31 March 2005 (2004 \$1,435,692).

The cash settlement requirements of forward foreign exchange contracts approximates the notional contract amounts shown above.

### (b) Credit Risk

The Trust has advances of \$411,201 (2004 \$517,926) due from various investment entities and Marae which are unsecured. The Trust does not have any other significant concentrations of credit risk. The Trust does not require any collateral or security to support financial instruments as it only deposits with, or lends to, banks and other financial institutions with high credit ratings. The Trust further minimise their credit exposure by limiting the amount of surplus funds placed with any one financial institution. The Trust does not expect the non-performance of any obligations at balance date.

### (c) Fair Values

*Cash, Accounts Receivables, Unsecured Loans, Accounts Payables and Advances*

The carrying value of these items is equivalent to their fair values.



## 26 FOREIGN CURRENCY DENOMINATED MONETARY ASSETS & LIABILITIES

Current assets and current liabilities not hedged are:

	Consolidated		Parent	
	2005 \$'000	2004 \$'000	2005 \$'000	2004 \$'000
<b>Current asset:</b>				
US dollars	-	2,311	-	-
Euro dollars	-	52	-	-
<b>Current liability:</b>				
US dollars	-	44	-	-
Euro dollars	-	46	-	-

## 27 RELATED PARTIES

Amounts outstanding between the Trust and related parties are:

	Consolidated		Parent	
	2005 \$'000	2004 \$'000	2005 \$'000	2004 \$'000
<b>Owing by:</b>				
Subsidiaries	-	-	129,823	135,955

Waikato Raupatu Lands Trust is the ultimate parent entity of the Group. All members of the Group are considered to be related parties of the Trust.

Transactions between related entities include loans and advances to and from certain subsidiaries and associates.

Tainui Group Holdings Limited charged the Trust \$97,716 (2004 - \$60,036) for administration services. There were no purchases of goods or services from the Groups subsidiaries. All transactions between companies within the Group were conducted at an arm's length basis.

Tainui Group Holdings Limited made a distribution of \$7,435,000 (2004 - \$5,450,000) to the Trust being 60% of net operating profit before asset realisations and revaluations.

## 28 EVENTS SUBSEQUENT TO BALANCE DATE

Te Rapa 2002 Limited, as joint venture partner of The Base Joint Venture, has entered into a general security agreement and guarantee limited to 50% of the \$30 million facility Westpac Banking Corporation has provided to The Base Joint Venture.



## 29 RECONCILIATION OF CASH FLOWS FROM OPERATING ACTIVITIES

	Consolidated		Parent	
	2005 \$'000	2004 \$'000	2005 \$'000	2004 \$'000
Reconciliation with operating surplus after distributions	16,156	11,329	(5,630)	(4,581)
Add non-cash items				
Depreciation	1,318	1,172	914	824
Equity accounted earnings in associate	(950)	(958)	-	-
Investment revaluation	(5,413)	(254)	303	68
Investment returns	(1,240)	-	-	-
Livestock increase	(92)	(95)	-	(95)
Minority share	-	27	-	-
Provision for doubtful debts	62	110	-	83
Other	100	88	674	1,683
	(6,215)	90	1,891	2,563
Add (Gain) loss on sale of fixed assets	(1)	283	-	(1)
Add movements in non current assets				
Investment and development properties	(4,504)	2,850	-	-
Add movements in working capital				
Accounts receivable	2,045	2,808	(763)	(895)
Prepayments	1,157	1,767	15	10
GST	(207)	(51)	(2)	(27)
Accounts payable	(2,119)	(1,790)	21	7
Inventory	1,351	(1,709)	766	-
Provision for grants	249	380	249	380
Provision for dividends	(277)	-	-	-
	2,199	1,405	286	(525)
<b>NET CASH INFLOW/(OUTFLOW) FROM OPERATING ACTIVITIES</b>	<b>7,635</b>	<b>15,957</b>	<b>(3,453)</b>	<b>(2,544)</b>

The prior year cash flows have been restated to ensure consistency with the current year.



### 30 DIRECTORS FEES

Director	Company	Consolidated		Parent	
		2005 \$'000	2004 \$'000	2005 \$'000	2004 \$'000
Batley R	Raukura Moana Fisheries Ltd	-	15	-	-
Berryman J	Waikato Raupatu Trustee Company Ltd	8	12	8	12
Eriksen J	Tainui Group Holdings Ltd	18	-	-	-
Kara T	Waikato Raupatu Trustee Company Ltd	7	12	7	12
Mahuta R	Waikato Raupatu Trustee Company Ltd	34	21	34	21
Mahuta T	Waikato Raupatu Trustee Company Ltd and Tainui Group Holdings Ltd	15	17	9	17
McLeod R	Tainui Group Holdings Ltd	47	5	-	-
Morgan T	Waikato Raupatu Trustee Company Ltd	38	32	38	32
Nabbs B	Hamilton Riverview Hotel Ltd and Riverside Casino Ltd	36	27	-	-
Papa W	Raukura Moana Fisheries Ltd	-	30	-	-
Porima K	Waikato Raupatu Trustee Company Ltd and Tainui Group Holdings Ltd	64	45	36	15
Roa T	Waikato Raupatu Trustee Company Ltd	7	8	7	8
Schaafhausen R	Waikato Raupatu Trustee Company Ltd	9	9	9	9
Solomon H	Waikato Raupatu Trustee Company Ltd and Tainui Group Holdings Ltd	26	62	8	32
Solomon S	Waikato Raupatu Trustee Company Ltd	2	-	2	-
Spencer J	Tainui Group Holdings Ltd	50	50	-	-
Te Ao P	Waikato Raupatu Trustee Company Ltd	2	-	2	-
Tuteao P	Waikato Raupatu Trustee Company Ltd	-	21	-	21
Wetere K	Waikato Raupatu Trustee Company Ltd and Tainui Group Holdings Ltd	36	39	6	9
Wilson J	Waikato Raupatu Trustee Company Ltd	32	17	32	17
Te Kauhanganui Representatives		81	130	81	130
		512	552	279	335



# AUDITOR'S REPORT

## TO THE TRUSTEES OF WAIKATO RAUPATU LANDS TRUST

FOR THE YEAR ENDED 31 MARCH 2005

We have audited the financial report on pages 36 to 58. The financial statements provide information about the past financial performance of Waikato Raupatu Lands Trust and group and its financial position as at 31 March 2005. This information is stated in accordance with the accounting policies set out on pages 40 to 44.

### TRUSTEES' RESPONSIBILITIES

The Trustees are responsible for the preparation of financial statements, in accordance with New Zealand law and generally accepted accounting practice, which fairly reflects the financial position of Waikato Raupatu Lands Trust and group as at 31 March 2005 and the results of its operations and cash flows for the year ended 31 March 2005.

### AUDITORS' RESPONSIBILITIES

It is our responsibility to express an independent opinion on the financial statements presented by the Trustees and report our opinion to you.

### BASIS OF OPINION

An audit includes examining, on a test basis, evidence relevant to the amounts and disclosures in the financial statements. It also includes assessing:

- the significant estimates and judgements made by the Trustees in the preparation of the financial statements, and
- whether the accounting policies are appropriate to Waikato Raupatu Lands Trust's circumstances, consistently applied and adequately disclosed.

We conducted our audit in accordance with New Zealand Auditing Standards. We planned and performed our audit so as to obtain all the information and explanations which we considered necessary in order to provide us with sufficient evidence to obtain reasonable assurance that the financial statements are free from material misstatements, whether caused by fraud or error. In forming our opinion we also evaluated the overall adequacy of the presentation of information in the financial statements.

Other than in our capacity as auditor and the provision of taxation advice, we have no relationship with or interests in Waikato Raupatu Lands Trust or any of its subsidiaries.

### UNQUALIFIED OPINION

We have obtained all the information and explanations that we have required.

In our opinion the financial statements on pages 36 to 58 fairly reflects the financial position of Waikato Raupatu Lands Trust and group as at 31 March 2005 and the results of its operations and cash flows for the year ended on that date.

Our audit was completed on 28 October 2005 and our unqualified opinion is expressed as at that date.



HAMILTON, NEW ZEALAND

**Deloitte.**

CHARTERED ACCOUNTANTS



# DIRECTORY

FOR THE YEAR ENDED 31 MARCH 2005

## Date of Establishment

10 November 1995

## Function

To administer the Trust's assets for the general benefit of its beneficiaries as defined in the Waikato Raupatu Lands Trust Deed and the Waikato Raupatu Claims Settlement Act 1995.

## Trustee

Waikato Raupatu Trustee Company Limited

## Auditor

Deloitte  
P O Box 17  
HAMILTON

## Solicitor

Minter Ellison Rudd Watts  
P O Box 3798  
AUCKLAND

## Banker

Bank of New Zealand  
524 Te Rapa Road  
HAMILTON

## Postal Address

Private Bag 542  
NGARUAWAHIA

Telephone +64 7 824 8689  
Facsimile +64 7 824 5133







Waikato Raupatu Lands Trust